

TECHNICAL MANUAL
UNIT AND DIRECT SUPPORT
MAINTENANCE REPAIR PARTS AND SPECIAL
TOOLS LIST
(INCLUDING DEPOT MAINTENANCE REPAIR PARTS
AND SPECIAL TOOLS)

FOR

AIR COMPRESSOR RECIPROCAL
ELECTRIC MOTOR DRIVEN
CASTER MOUNTED
5 CFM, 175 PSI
NSN 4310-01-242-1804

DESTRUCTION NOTICE-For unclassified, limited documents, destroy
by any method that will prevent disclosure of contents or
"reconstruction of the document."

Approved for public release; distribution is unlimited.

HEADQUARTERS, DEPARTMENT OF THE ARMY

10 MAY 1990

**UNIT AND DIRECT SUPPORT MAINTENANCE
REPAIR PARTS AND SPECIAL TOOLS LIST
FOR
AIR COMPRESSOR, RECIPROCAL,
ELECTRIC MOTOR DRIVEN,
CASTER MOUNTED
5 CFM, 175 PSI
NSN 4310-01-242-1804**

Current as of 8 December 1989

REPORTING OF ERRORS AND RECOMMENDING IMPROVEMENTS

You can help improve this manual. If you find any mistake or if you know of a way to improve the procedures, please let us know. Mail your letter, DA Form 2028, (Recommended Changes to Publications and Blank Forms) or DA Form 2028-2 located in the back of this manual direct to: Commander, U.S. Army Troop Support Command, ATTN: AMSTR-MCTS, 4300 Goodfellow Blvd., St. Louis, MO 63120-1798. A reply will be furnished directly to you.

Approved for public release; distribution is unlimited

TABLE OF CONTENTS

			Page	Illus. Figure
Section	I.	INTRODUCTION.....	1	
Section	II.	REPAIR PARTS LIST.....	1-1	
Group	01.	Electric motor starter, pressure switch, thermostat and wiring	1-1	1
	02.	Guard assembly	2-1	2
	03.	Compressor/Pump and flywheel	3-1	3
		Compressor cylinder head assemblies.....	4-1	4
		Compressor pistons, connecting rods and crankshaft.....	5-1	5
	04.	Electric motor	6-1	6
	05.	Air tank, valves, and casters.....	7-1	7
	06.	Dehydrator assembly	8-1	8
		Regulator/Filter assembly	9-1	9
		Air discharge system	10-1	10
Group	07.	Bulk	Bulk-1	Bulk
Section	III.	SPECIAL TOOLS LIST (Not Applicable).....		
Section	IV.	CROSS REFERENCE INDEXES:		
		National Stock Number Index.....	I-1	
		Part Number Index	I-2	
		Figure and Item Number Index.....	I-7	

**UNIT AND DIRECT SUPPORT
MAINTENANCE REPAIR PARTS AND
SPECIAL TOOLS LIST**

SECTION I INTRODUCTION

1. SCOPE. This RPSTL lists and authorizes spares and repair parts; special tools; special test, measurement, and diagnostic equipment (TMDE); and other special support equipment required for performance of Unit and Direct Support Maintenance of the Air Compressor. It authorizes the requisitioning, issue, and disposition of spares, repair parts and special tools as indicated by the source, maintenance and recoverability (SMR) codes.

2. GENERAL. In addition to this section, Introduction, this Repair Parts and Special Tools List is divided into the following sections:

a. Section II. Repair Parts List. A list of spares and repair parts authorized by this RPSTL for use in the performance of maintenance. The list also includes parts which must be removed for replacement of the authorized parts. Parts lists are composed of functional groups in ascending alphanumeric sequence, with the parts in each group listed in ascending figure and item number sequence. Bulk materials are listed in item name sequence. Repair parts kits are listed separately in their own functional group within Section II. Repair parts for repairable special tools are also listed in this section. Items listed are shown on the associated illustration(s)/figure(s).

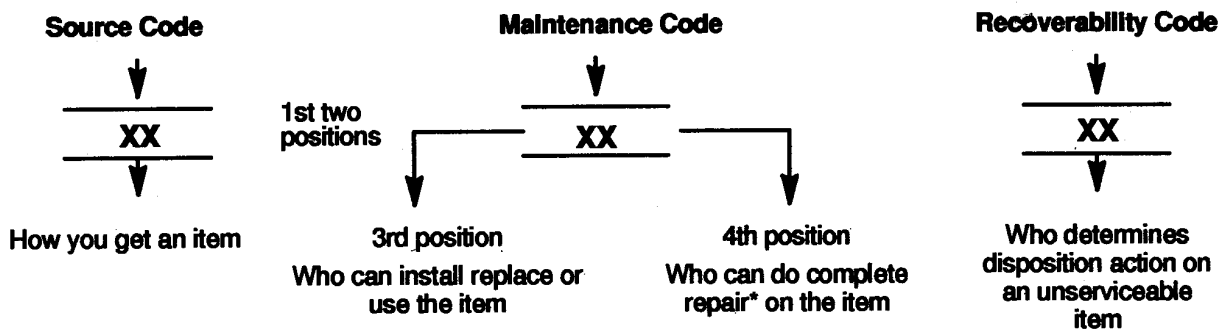
b. Section III. Special Tools List. A list of special tools, special TMDE, and other special support equipment authorized by this RPSTL (as indicated by Basis of Issue (BOI) information in DESCRIPTION AND USABLE ON CODE column) for the performance of maintenance.

c. Section IV. Cross-references Indexes. A list, in National Item Identification Number (NIIN) sequence, of all National stock numbered items appearing in the listing, followed by a list in alphanumeric sequence of all part numbers appearing in the listings. National stock numbers and part numbers are cross referenced to each illustration figure and item number appearance. The figure and item number index lists figure and item number in alphanumeric sequence and cross references NSN, FSCM and part number.

3. EXPLANATION OF COLUMNS (SECTIONS II AND III).

a. ITEM NO. (Column (1)). Indicates the number used to identify items called out in the illustration.

b. SMR Code (Column (2)). The Source, Maintenance, and Recoverability (SMR) code is a 5-position code containing supply/requisitioning information, maintenance category authorization criteria, and disposition instruction, as shown in the following breakout:



NOTE

*Complete Repair: Maintenance capacity, capability, and authority to perform all corrective maintenance tasks of the "Repair" function in a use/user environment in order to restore serviceability to a failed item.

(1) Source Code. The source code tells you how to get an item needed for maintenance, repair, or overhaul of an end item/equipment. Explanations of source codes follows:

Code

PA
PB
PC**
PD
PE
PF
PG

Explanation

Stocked items; use the applicable NSN to request/requisition items with these source codes. They are authorized to the category indicated by the code entered in the 3d position of the SMR code.

**NOTE: Items coded PC are subject to deterioration.

KD
KF
KB

Items with these codes are not to be requested/requisitioned individually. They are part of a kit which is authorized to the maintenance category indicated in the 3d position of the SMR code. The complete kit must be requisitioned and applied.

MO--(Made at org.
AVUM Level
MF--(Made at DS/
AVUM Level
MH--(Made at GS
Level)
ML--Made at Spe-
cialized Repair
Activity (SRA)
MD--(Made at Depot)

Explanation

Items with these codes are not to be requested/requisitioned individually. They must be made from bulk material which is identified by the part number in the DESCRIPTION and USABLE ON CODE (UOC) column and listed in the Bulk Material group of the repair parts list in this RPSTL. If the item is authorized to you by the 3d position code of the SMR code, but the source code indicates it is made at a higher level., order the item from the higher level. of maintenance.

AO--(Assembled by
org/AVUM Level)
AF--(Assembled by
DS/AVIM Level)
AH--(Assembled by
GS Category)
AL--(Assembled by
SRA)
AD--(Assembled by
Depot)

Explanation

Items with these codes are not to be requested/requisitioned individually. The parts that make up the assembled item must be requisitioned or fabricated and assembled at the level. of maintenance indicated by the source code. If the 3d position code of the SMR code authorizes you to replace the item, but the source code indicates the items are assembled at a higher level., order the item from the higher level. of maintenance.

Code

Explanation

- XA--Do not requisition "XA" -coded item. Order its next higher assembly. (Also, refer to the NOTE below.)
- XB--If an "XB" item is not available from salvage, order it using the FSCM and part number given.
- XC--Installation drawing, diagram, instruction sheet, field service drawing, that is identified by manufacturer's part number.
- XD--Item is not stocked. Order an "XD" coded item through normal supply channels using the FSCM and part number given, if no NSN is available.

NOTE

Cannibalization or controlled exchange, when authorized, may be used as a source of supply for items with the above source codes, except for those source coded "XA" or those aircraft support items restricted by requirements of AR 7501.

- (2) **Maintenance Code.** Maintenance codes tells you the level.(s) of maintenance authorized to USE and REPAIR support items. The maintenance codes are entered in the third and fourth positions of the SMR code as follows:
 - (a) The maintenance code entered in the third position tells you the lowest maintenance level. authorized to remove, replace, and use an item. The maintenance code entered in the third position will indicate authorization to one of the following levels of maintenance.

Code

Application/Explanation

- C-Crew or operator maintenance done within organizational or aviation unit maintenance.
- O-Organizational or aviation unit category can remove, replace, and use the item.

F -Direct support or aviation intermediate level. can remove, replace, and use the item.

H -General support level. can remove, replace, and use the item.

L -Specialized repair activity can remove, replace, and use the item.

D -Depot level. can remove, replace, and use the item.

- (b) The maintenance code entered in the fourth position tells whether or not the item is to be repaired and identifies the lowest maintenance level. with the capability to do complete repair (i.e. , perform all authorized repair functions.) NOTE: Some limited repair may be done on the item at a lower level. of maintenance, if authorized by the Maintenance Allocation Chart (MAC.) and SMR codes. This position will contain one of the following maintenance codes.

Code	Application/Explanation
O	-Organizational or (aviation unit) is the lowest level. that can do complete repair of the item.
F	-Direct support or aviation intermediate is the lowest level. that can do complete repair of the item.
H	-General Support is the lowest level. that can do complete repair of the item.
L	-Specialized repair activity is the lowest level. that can do complete repair of the item.
D	-Depot is the lowest level. that can do complete repair of the item.
Z	-Nonreparable. No repair is authorized.
B	-No repair is authorized. (No parts or special tools are authorized for the maintenance of a "B" coded item). However, the item may be reconditioned by adjusting, lubricating, etc., at the user level.

- (3) Recoverability Code.** Recoverability codes are assigned to items to indicate the disposition action on unserviceable items. The recoverability code is entered in the fifth position of the SMR Code as follows:

Recoverability Codes	Application/Explanation
Z	-Nonreparable item. When unserviceable, condemn and dispose of the item at the level. of maintenance shown in 3d position of SMR Code.

Recoverability Codes	Application/Explanation
O	-Reparable item. When uneconomically reparable, condemn and dispose of the item at organizational or aviation unit level.
F	-Reparable item. When uneconomically reparable, condemn and dispose of the item at the direct support or aviation intermediate level.
H	-Reparable item. When uneconomically reparable, condemn and dispose of the item at the general support level.
D	-Reparable item. When beyond lower level. repair capability, return to depot. Condemnation and disposal of item not authorized below depot level.
L	-Reparable item. Condemnation and disposal not authorized below specialized repair activity (SRA).
A	-Item requires special handling or condemnation procedures because of specific reasons (e.g., precious metal content, high dollar value, critical material, or hazardous material). Refer to appropriate manuals/directives for specific instructions.

c. FSCM (Column (3)). The Federal Supply Code for Manufacturer (FSCM) is a 5-digit numeric code which is used to identify the manufacturer, distributor, or Government agency, etc., that supplies the item.

d. PART NUMBER (Column (4)). Indicates the primary number used by the manufacturer, (individual, company, firm, corporation, or Government activity), which controls the design and characteristics of the item by means of its engineering drawings, specifications standards, and inspection requirements to identify an item or range of items.

NOTE

When you use an NSN to requisition an item, the item you receive may have a different part number from the part ordered.

e. DESCRIPTION AND USABLE ON CODE (UOC) (Column (5)). This column includes the following information:

- (1) The Federal item name and, when required, a minimum description to identify the item.
- (2) The physical security classification of the item is indicated by the parenthetical entry, e.g., Phy Sec CI-Confidential, Phy Sec CI (S)-Secret, Phy Sec CI (T)-Top Secret.
- (3) Items that are included in kits and sets are listed below the name of the kit or set.
- (4) Spare/repair parts that make up an assembled item are listed immediately following the assembled item line entry.
- (5) Part numbers for bulk materials are referenced in this column in the line item entry for the item to be manufactured/fabricated.
- (6) When the item is not used with all serial numbers of the same model, the effective serial numbers are shown on the last line(s) of the description (before UOC).

- (7) The usable on code, when applicable (see paragraph 5, Special Information).
- (8) In the Special Tools List section, the basis of issue (BOI) appears as the last line(s) in the entry for each special tool, special TMDE, and other special support equipment. When density of equipments supported exceeds density spread indicated in the basis of issue, the total authorization is increased proportionately.
- (9) The statement "END OF FIGURE" appears just below the last item description in Column 5 for a given figure in both Section II and Section III.
- (10) The indenture, shown as dots appearing before the repair part, indicates that the item is a repair part of the next higher assembly.

f. **QTY (Column 6).** The QTY (quantity per figure column) indicates the quantity of the item used in the breakout shown on the illustration figure, which is prepared for a functional group, subfunctional group, or an assembly. A "V" appearing in this column in lieu of a quantity indicates that the quantity is variable and may vary from application to application.

4. EXPLANATION OF COLUMNS (SECTION IV).

a. NATIONAL STOCK NUMBER (NSN) INDEX.

- (1) **STOCK NUMBER column.** This column lists the NSN by National item identification number (NIIN) sequence. The NIIN consists of the last nine digits of the

NSN
NSN, i.e. (5305-01-574-1467).
NIIN

When using this column to locate an item, ignore the first 4 digits of the NSN. However, the complete NSN should be used when ordering items by stock number.

- (2) **FIG. column.** This column lists the number of the figure where the item is identified/located. The figures are in numerical order in Section II and Section III.
- (3) **ITEM column.** The item number identifies the item associated with the figure listed in the adjacent FIG. column. This item is also identified by the NSN listed on the same line.

b. PART NUMBER INDEX. Part numbers in this index are listed by part number in ascending alphanumeric sequence (i e., vertical arrangement of letter and number combination which places the first letter or digit of each group in order A through Z, followed by the numbers 0 through 9 and each following letter or digit in like order).

- (1) **FSCM column.** The Federal Supply Code for Manufacturer (FSCM) is a 5-digit numeric code used to identify the manufacturer, distributor, or Government agency, etc., that supplies the item.
- (2) **PART NUMBER column.** Indicates the primary number used by the manufacturer (individual, firm, corporation, or Government activity), which controls the design and characteristics of the item by means of its engineering drawings, specifications standards, and inspection requirements to identify an item or range of items.
- (3) **STOCK NUMBER column.** This column lists the NSN for the associated part number and manufacturer identified in the PART NUMBER and FSCM columns to the left.

- (4) **FIG. column.** This column lists the number of the figure where the item is identified/located in Sections II and III.
- (5) **ITEM column.** The item number is that number assigned to the item as it appears in the figure referenced in adjacent figure number column.

c. FIGURE AND ITEM NUMBER INDEX.

- (1) **FIG. column.** This column lists the number of the figure where the item is identified/located in Section II and III.
- (2) **ITEM column.** The item number is that number assigned to the item as it appears in the figure referenced in the adjacent figure number column.
- (3) **STOCK NUMBER column.** This column lists the NSN for the item.
- (4) **FSCM column.** The Federal Supply Code for Manufacturer (FSCM) is a 5-digit numeric code used to identify the manufacturer, distributor, or Government agency, etc., that supplies the item.
- (5) **PART NUMBER column.** Indicates the primary number used by the manufacturer (individual, firm, corporation, or Government activity), which controls the design and characteristics of the item by means of its engineering drawings, specifications standards, and inspection requirements to identify an item or range of items.

5. SPECIAL INFORMATION.

a. USABLE ON CODE. The usable on code appears in the lower left corner of the Description column heading. Usable on codes are shown as "UOC:" in the Description Column (justified left) on the last line applicable item description/nomenclature. Uncoded items are applicable to all models.

b. ASSOCIATED PUBLICATIONS. The publications listed below pertains to the Lubricating and Servicing Unit and its components.

Publication	Short Title
TM 5-4310-384-13	Compressor Unit, Reciprocal, Air, 5 CFM/175 PSI

6. HOW TO LOCATE REPAIR PARTS.

a. When National Stock Number or Part Number is NOT known.

- (1) **First.** Using the table of contents, determine the assembly group or subassembly group to which the item belongs. This is necessary since figures are prepared for assembly groups and subassembly groups, and listings are divided into the same groups.
- (2) **Second.** Find the figure covering the assembly group or subassembly group to which the item belongs.
- (3) **Third.** Identify the item on the figure and note the item number.
- (4) **Fourth.** Refer to the Repair Parts List for the figure to find the part number for the item number noted on the figure.

(5) **Fifth.** Refer to the Part Number Index to find the NSN, if assigned.

b. When National Stock Number or Part Number Is Known:

(1) **First.** Using the Index of National Stock Numbers and Part Numbers, find the pertinent National Stock Number or Part Number. The NSN index is in National Item Identification Number (NIIN) sequence (see c-4a.(1)). The part numbers in the Part Number index are listed in ascending alphanumeric sequence (see paragraph c4.b). Both indexes cross-reference you to the illustration figure and item number of the item you are looking for.

(2) **Second.** After finding the figure and item number, verify that the item is the one you are looking for, then locate the item number in the repair parts list for the figure.

7. **ABBREVIATIONS.** Abbreviations used in this manual are listed in MIL-STD-12.

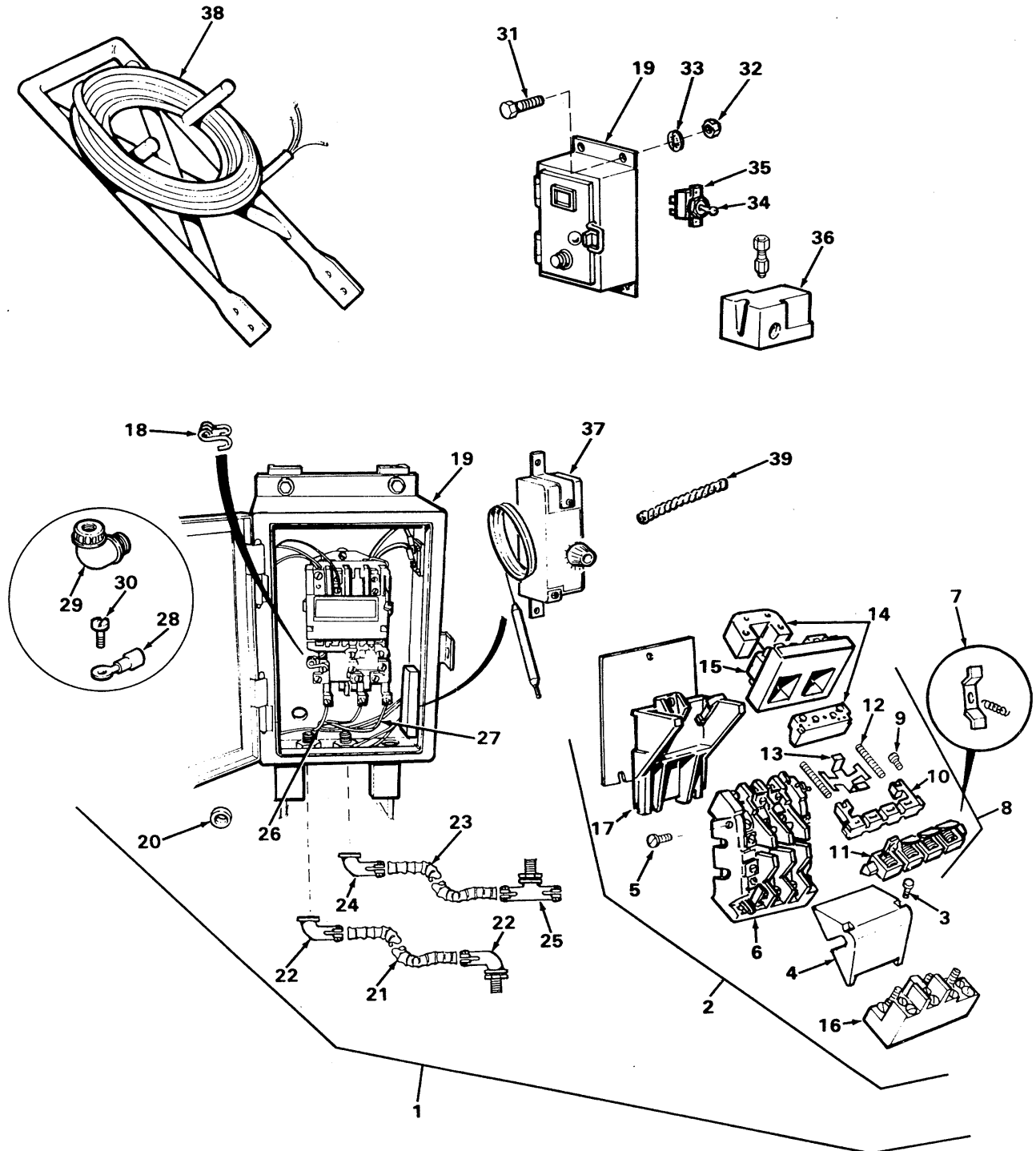


FIGURE 1. Electric motor starter, pressure switch, thermostat and wiring.

SECTION II

(1) ITEM NO	(2) SMR CODE	(3) FSCM	(4) PART NUMBER	(5) DESCRIPTION AND USABLE ON CODES (UOC)	(6) QTY
				GROUP 01 MOTOR CONTROLS	
				FIG. 1 ELECTRIC MOTOR STARTER, PRESSURE SWITCH, THERMOSTAT AND WIRING	
1	XDOOO	04718	86-465	STARTER ELEC MOTOR.....	1
2	XDOOO	23826	14DP12AA	STARTER SUB ASSY.....	1
3	XDOZZ	23826	D73062001-1	SCREW SPECIAL.....	2
4	PAOZZ	23826	D73062001	COVER CONTACT BOARD.....	1
5	XDOZZ	23826	D24827-001	SCREW, TAPPING, THREA.....	2
6	PAOZZ	23826	D73116022	BOARD CONTACT.....	1
7	PAOZZ	23826	75CF14	CONTACTS AND SPRING.....	2
8	XDOOZ	23826	75P1000	CROSSARM ASSEMBLY.....	1
9	PAOZZ	96906	MS35215-53	SCREW, MACHINE.....	2
10	XDOZZ	23826	D54873001	SUPPORT CROSSARM.....	1
11	XDOZZ	23826	D54670-001	CROSSARM.....	1
12	PAOZZ	23826	D24826-001	SPRING CROSSARM.....	2
13	XDOZZ	23826	D24817-001	CLIP ARMATURE.....	1
14	XDOZZ	23826	D25551-001	MAGNET-ARMATURE.....	1
15	PAOZZ	23826	75D73070A	COIL.....	1
16	PAOZZ	23826	48DC11AA2	RELAY OVERLOAD.....	1
17	XDOZZ	23826	D74400001	BASE.....	1
18	PAOZZ	23826	H41	HEATING ELEMENT, ELE.....	3
19	XAOZZ	04718	86-503	ENCLOSURE NEMA 12.....	1
20	PAOZZ	70485	1724	GROMMET.....	1
21	XDOZZ	04718	86-428	CONDUIT FLEXIBLE 1/2 IN X 8 IN LG.....	1
22	XDOZZ	78229	XC-491	BOX CONNECTOR, ELECT 1/2 INCH 90 DEGREE.	2
23	XDOZZ	04718	86-427	CONDUIT FLEXIBLE 3/8 IN X 17 IN LG.....	1
24	XDOZZ	03743	7245-V	CONNECTOR 3/8 INCH, 45 DEGREE.....	1
25	XDOZZ	83879	C-15L	BOX CONNECTOR, ELECT 3/8 INCH STRAIGHT.	1
26	MOOZZ	81348	12 GA THW BL	WIRE ELECTRIC M/F P/N J-C-30A-THW- 600-C-E-1/12-SR-SJ-0 2EA REQ 24IN LG.	2
27	MOOZZ	81348	16 GA THW RED	WIRE ELECT M/F P/N J-C-30A-THW-600- C-E-1/16-SR-SJ-2 2EA REQ 30IN LG .	2
28	PAOZZ	96906	MS20659-141	TERMINAL, LUG.....	1
29	PAOZZ	83879	SR9-507	CONNECTOR CORD.....	1
30	PAOZO	96906	MS35206-279	SCREW, MACHINE.....	1
31	PAOZZ	96906	MS90728-8	SCREW, CAP, HEXAGON H.....	4
32	PAOZZ	96906	MS51967-2	NUT HEX.....	4
33	PAOZH	96906	MS35333-40	WASHER, LOCK.....	4
34	PAOZA	96906	MS35059-22	SWITCH, TOGGLE.....	1
35	XDOZZ	73559	YO1	PLATE SWITCH.....	1
36	PAOZZ	23826	69MC8Y2A	SWITCH, PRESSURE W/UNLOADER VALVE.....	1
37	PAOZZ	25795	2E552	THERMOSTAT ASSEMBLY.....	1
38	XDOZZ	04718	86-389	CORD ELECTRIC 50FT REQUIRED.....	1
39	PAOZZ	04229	SP1/4TF	WIRE-WRAP.....	50

END OF FIGURE

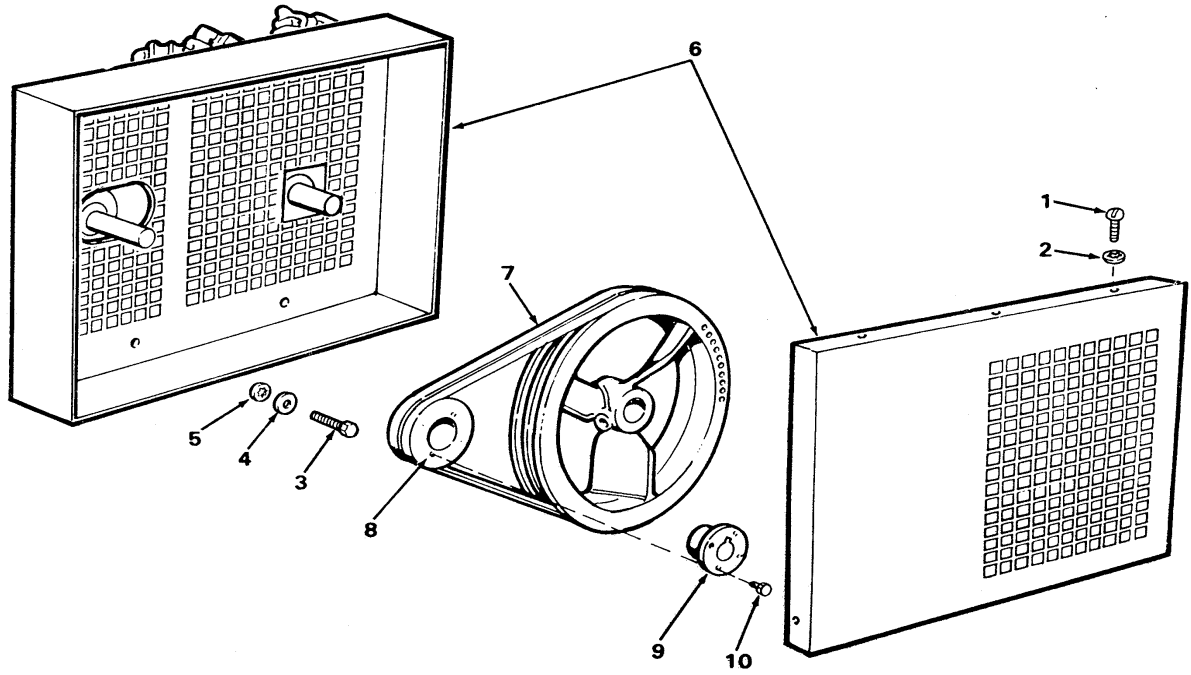


FIGURE 2. Guard assembly

SECTION II

TM 5-4310-384-23P

(1) ITEM NO	(2) SMR CODE	(3) FSCM	(4) PART NUMBER	(5) DESCRIPTION AND USABLE ON CODES (UOC)	(6) QTY
-------------------	--------------------	-------------	-----------------------	--	------------

GROUP 02 COMPRESSOR DRIVE

FIG. 2 GUARD ASSEMBLY

1	PAOZZ	96906	MS35206-243	SCREW, MACHINE	5
2	PAOZZ	96906	MS35333-38	WASHER, LOCK	5
3	PAOZZ	96906	MS90728-32	BOLT, MACHINE	2
4	PAOZH	96906	MS35333-41	WASHER, LOCK	2
5	PAOZF	96906	MS27183-11	WASHER, FLAT	2
6	XDOOO	04718	88-684	GUARD ASSEMBLY	1
7	PAOZZ	71176	A52	BELT DRIVE	2
8.	XDOZZ	71176	2AK46H	PULLEY DRIVE	1
9	XDOZZ	71176	H5/8	BUSHING PULLEY	1
10	PAOZZ	96906	MS90725-1	SCREW, CAP, HEXAGON H	2

END OF FIGURE

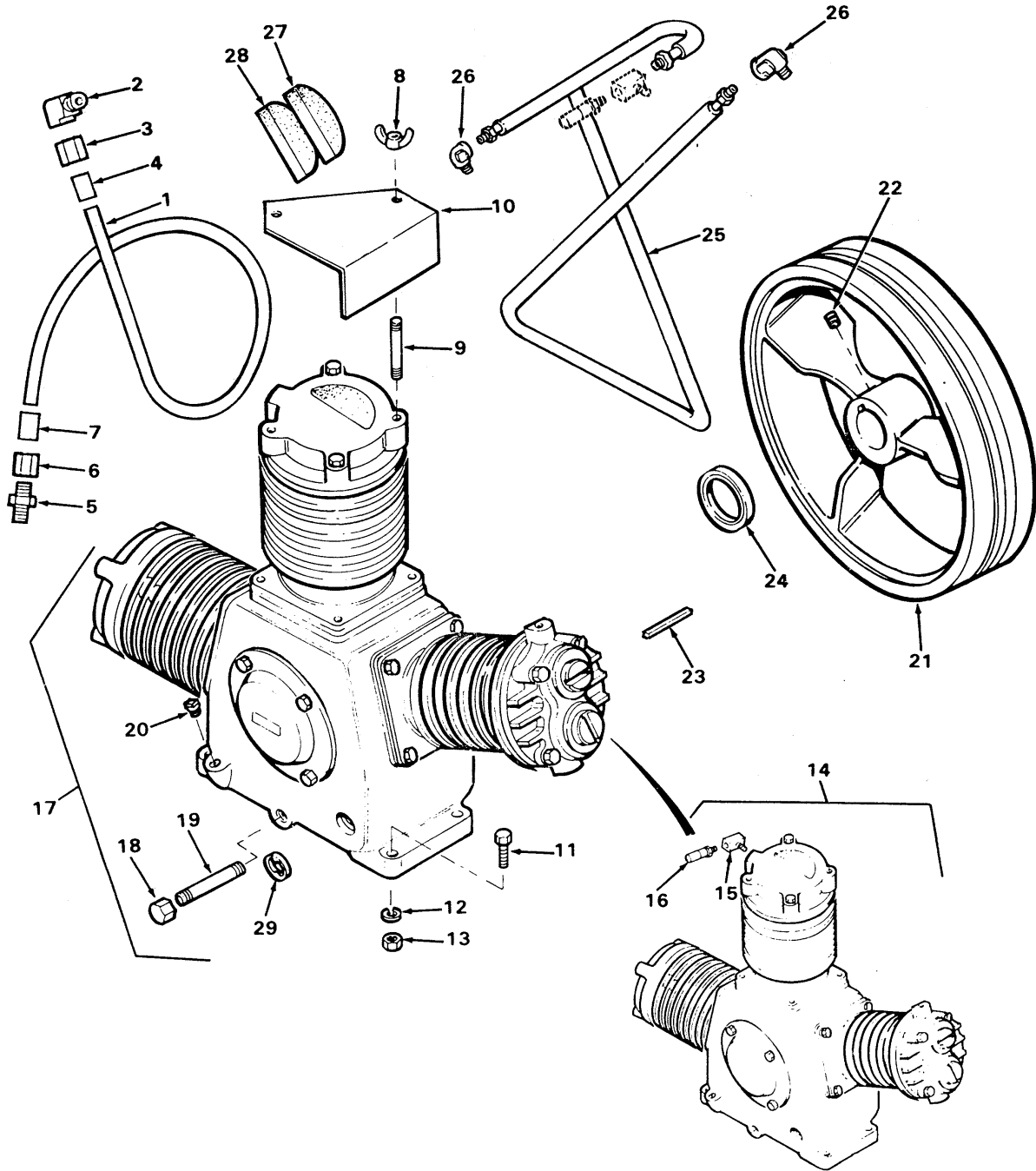


FIGURE 3. Compressor/pump and flywheel

SECTION II

(1) ITEM NO	(2) SMR CODE	(3) FSCM	(4) PART NUMBER	(5) DESCRIPTION AND USABLE ON CODES (UOC)	(6) QTY
				GROUP 03 COMPRESSOR UNIT	
				FIG. 3 COMPRESSOR/PUMP AND FLYWHEEL	
1	MOOZZ	81346	ASTMB280	AFTERCOOLER M/F ASTMB280-80 3/8 IN OD 6 FT LG	1
2	PAOZZ	93061	68C-6-6	ADAPTER, STRAIGHT, PI.....	1
3	XAOZZ	93061	61C-6	NUT, TUBE COUPLING.....	2
4	XAOZZ	93061	60C-6	SLEEVE, COMPRESSION.....	2
5	PAOZZ	93061	169C-6-6	CONNECTOR.....	1
6	XAOZZ	93061	61C-6	NUT, TUBE COUPLING.....	2
7	XAOZZ	93061	60C-6	SLEEVE, COMPRESSION.....	2
8	PAOZZ	96906	MS35425-72	NUT, PLAIN, WING	4
9	PAOZZ	04718	86-128	STUD.....	4
10	PAOZZ	04718	86-127	GUARD RAIN	2
11	PAOZZ	96906	MS90725-34	BOLT, MACHINE	4
12	PAOZH	96906	MS35333-41	WASHER, LOCK	4
13	PAOZF	96906	MS51967-5	NUT, PLAIN,	4
14	XCOFF	04718	CAW1CH	HEXAGON.....	4
15	PAOZZ	04718	86-186	COMPRESSOR PUMP.....	1
16	PBOZZ	75336	128-60X1/8	ADAPTOR, SPECIAL BRASS.....	1
17	PBOFF	11568	CAW1	VALVE, SAFETY RELIEF 6OPSIG. 1/8 IN. NPT	1
18	PAOZZ	11568	M-461	COMPRESSOR PUMP ORDER & INSTL P/N 86-186 & 128-60X1/8 ON NEW PUMP.	1
19	PAOZZ	96906	MS51953-59	CAP 3/8 INCH.....	1
20	PAOZZ	11568	M-1796	NIPPLE PIPE	1
21	XDOZZ	11568	NR-4-7AL	PLUG, PIPE.....	1
22	PAOZZ	11568	M-568	FLYWHEEL	1
23	PAOZZ	96906	MS20066-256	SETSCREW SOCKET HD.....	1
24	PAOZZ	11568	14812	KEY, MACHINE	1
25	XDOZZ	11568	P-5821D	SEAL, PLAIN ENCASED.....	1
26	PAOZZ	11568	Z-515	MANIFOLD, FLUID COOL	1
27	PAOZZ	11568	M-1586	FITTING COMPRESSION 1/2X3/8X90 DEG.....	3
28	PAOZZ	11568	M-1587	FILTER ELEMENT, INTA.....	2
29	PAOZZ	11568	B-14	PAD, INTAKE, COMPRESS.....	2
				INDICATOR, SIGHT, LIQ.....	1

END OF FIGURE

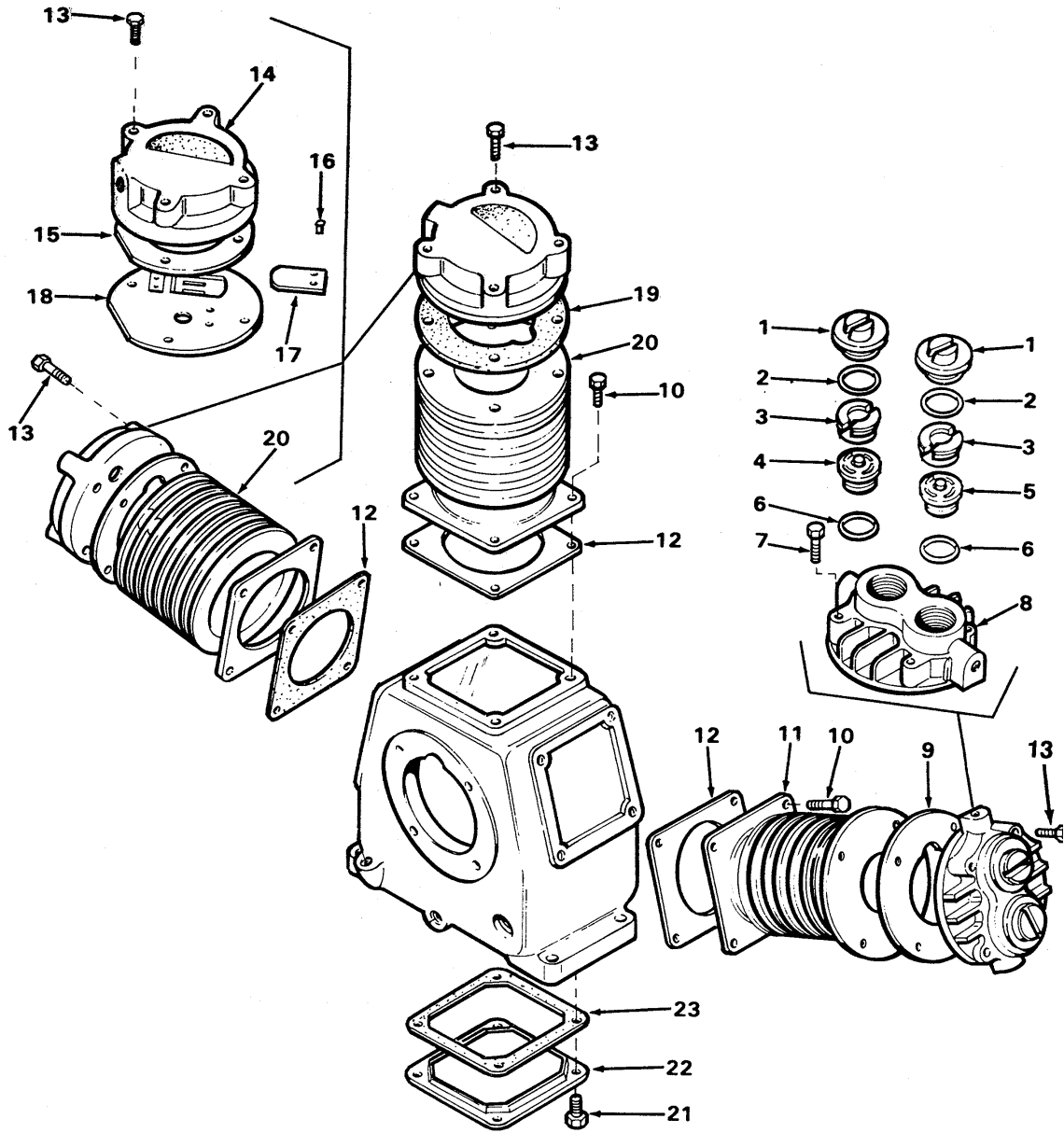


FIGURE 4. Compressor cylinder head assemblies

SECTION II

(1) ITEM NO	(2) SMR CODE	(3) FSCM	(4) PART NUMBER	(5) DESCRIPTION AND USABLE ON CODES (UOC)	(6) QTY
				GROUP 03 COMPRESSOR UNIT	
				FIG. 4 COMPRESSOR CYLINDER HEAD ASSEMBLIES	
1	XDOZZ	11568	B-28B	CAP VALVE CHAMBER.....	2
2	PAOZZ	11568	B-75	GASKET PART OF KIT P/N Z-772	2
3	PAOZZ	11568	B-26A	RETAINER,EXHAUST VA.....	2
4	PAOZZ	11568	Z-184	VALVE ASSEMBLY,INTA	2
5	PAOZZ	11568	Z-122A	VALVE ASSEMBLY,EXHA.....	2
6	PAOZZ	11568	U-48	GASKET PART OF KIT P/N Z-772	2
7	PAOZZ	96906	MS90725-36	BOLT,MACHINE 5/16-18X1/4 IN LG	4
8	XDOZZ	11568	C-1	CYLINDER HEAD,COMPR	1
9	PAOZZ	11568	C-31	GASKET PART OF KIT P/N Z-772	1
10	PAFZZ	96906	MS90728-29	BOLT,MACHINE	12
11	XDFZZ	11568	C-6B	CYLINDER HIGH PRESS	1
12	PAFZZ	11568	A-29	GASKET PART OF KIT P/N Z-772	3
13	PAOZZ	96906	MS90725-39	BOLT,MACHINE 5/16-18X1-1/4 IN LG	8
14	XDOZZ	11568	M-1561	CYLINDER HEAD,COMPR	2
15	PAOZZ	11568	M-1564	GASKET PART OF KIT P/N Z-772	2
16	PAOZZ	11568	M-1565	SCREW	8
17	PAOZZ	11568	M-1563	FLAPPER,MAGNETIC,VA	4
18	PAOZZ	11568	M-1562	PLATE,REED VALVE	2
19	PAOZZ	11568	B-31	GASKET PART OF KIT P/N Z-772	2
20	XDFZZ	11568	A-6A	CYLINDER LOW PRESS.....	2
21	PAOZZ	96906	MS90727-12	SCREW,CAP,HEXAGON H 1/4-20XI/2IN LG	4
22	PAOZZ	11568	A-15	COVER,ACCESS.....	1
23	PAOZZ	11568	A-33	GASKET	1
	PAOZZ	11568	Z-772	GASKET KIT PUMP.....	1
				GASKET (2) 4-2	
				GASKET (2) 4-6	
				GASKET (1) 4-9	
				GASKET (3) 4-12	
				GASKET (2) 4-15	
				GASKET (2) 4-19	

END OF FIGURE

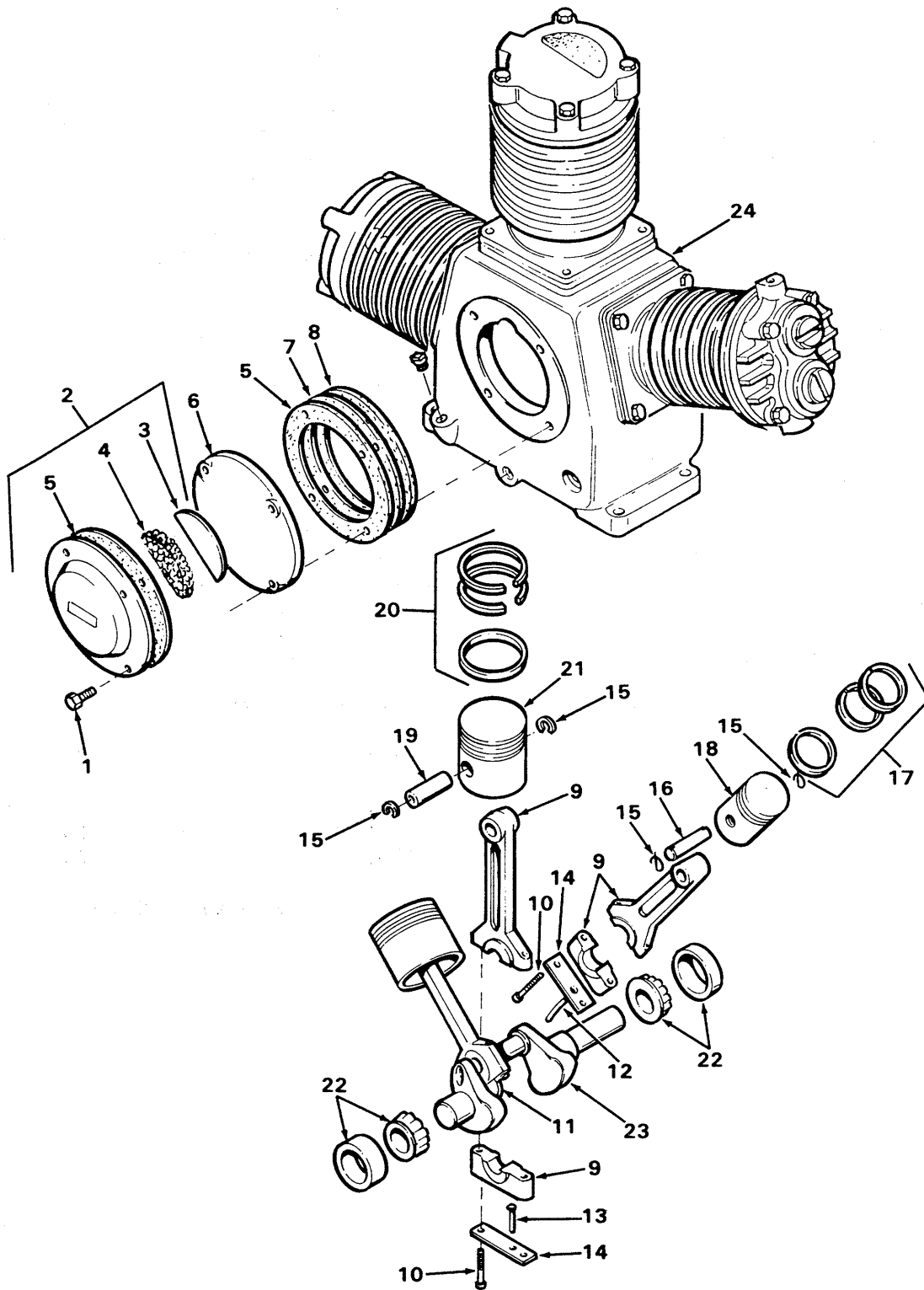


Figure 5. Compressor pistons, connecting rods and crankshaft

SECTION II

(1) ITEM NO	(2) SMR CODE	(3) FSCM	(4) PART NUMBER	(5) DESCRIPTION AND USABLE ON CODES (UOC)	(6) QTY
GROUP 03 COMPRESSOR UNIT					
FIG. 5 COMPRESSOR PISTONS, CONNECTING RODS AND CRANKSHAFT					
1	PAFZH	96906	MS90725-6	SCREW,CAP,HEXAGON H 1/4-28X1-1/2 IN..... LG.....	4
2	XDFZZ	11568	A-100	BREATHER CHAMBER AY	1
3	XDFZZ	11568	P-4582A	SEPARATOR.....	1
4	PAFZZ	11568	P-4581A	FILTER ELEMENT, INTA.....	1
5	PAFZZ	11568	C-30	GASKET PART OF KIT P/N Z-132	1
6	XDFZZ	11568	C-14C	COVER CRANKCASE	1
7	PAFZZ	11568	C-30A	GASKET PART OF KIT P/N Z-132	1
8	PAFZZ	11568	C-30B	GASKET PART OF KIT P/N Z-132	1
9	PAFZZ	11568	Z-1053	CONNECTING ROD AY	3
10	PAFZZ	96906	MS90727-10	SCREW,CAP,HEXAGON H	6
11	XDFZZ	11568	P-5087A	OIL SCOOP LH L/H NO 1 CYL	1
12	XDFZZ	11568	A-24-3	OIL SCOOP RH R/H NO 3 CYL	1
13	XDFZZ	11568	P-5086A	OIL SCOOP CENTER CENTER NO 2 CYL	1
14	XDFZZ	11568	A-24-4	RETAINER OIL SCOOP	3
15	PAFZZ	96906	MS16625-1056	RING,RETAINING.....	6
16	PAFZZ	11568	C-21A	PIN,PISTON HIGH PRESSURE.....	1
17	PAFZZ	11568	Z-C10	RING SET PART OF KIT P/N ZCAW.....	1
18	PAFZZ	11568	C-4A	PISTON, COMPRESSOR	1
19	PAFZZ	11568	A-21	PIN,PISTON LOW PRESSURE	2
20	PAFZZ	11568	Z-A10	RING SET LOW PRESS PART OF KIT P/N	2
				ZCAW.....	
21	PAFZZ	11568	A-4-A	PISTON LOW PRESSURE	2
22	PBFZZ	11568	Z-C16	MAIN BEARING ASSY.....	2
23	XDFZZ	11568	C-5	CRANKSHAFT,COMPRESS.....	1
24	XDFZZ	11568	B-9	CRANKCASE.....	1
	PAFZZ	11568	ZCAW	RING SET, PISTON.....	1
				RING SET (1) 5-17	
				RING SET LOW PRESS (2) 5-20	
	PAFZZ	11568	Z-132	GASKET KIT CRANKCASE COVER	1
				GASKET (1) 5-5	
				GASKET (1) 5-7	
				GASKET (1) 5-8	

END OF FIGURE

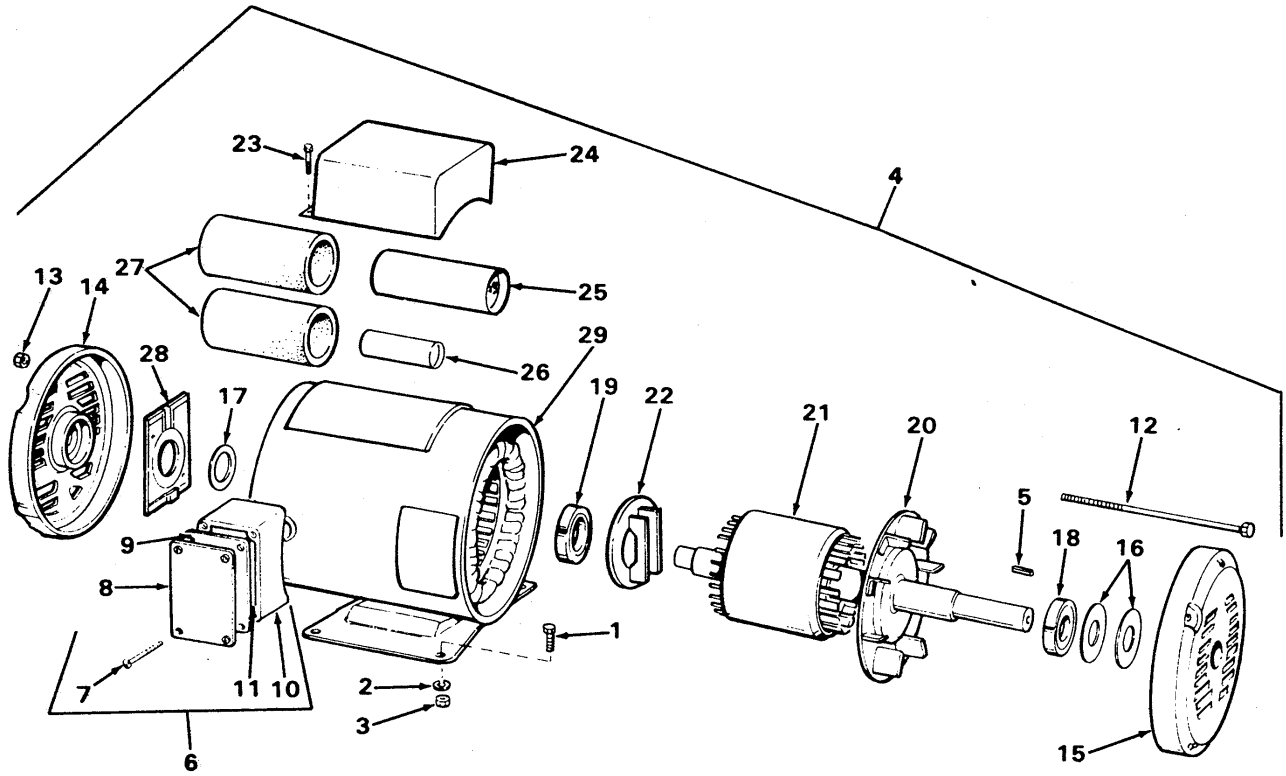


Figure 6. Electric motor

SECTION II

TM 5-4310-384-23P

(1) ITEM NO	(2) SMR CODE	(3) FSCM	(4) PART NUMBER	(5) DESCRIPTION AND USABLE ON CODES (UOC)	(6) QTY
				GROUP 04 MOTOR, ELECTRIC	
				FIG. 6 ELECTRIC MOTOR	
1	PAOZZ	96906	MS90728-32	BOLT,MACHINE	4
2	PAOZF	96906	MSZ7183-11	WASHER,FLAT	4
3	PAOZF	96906	MS51967-5	NUT,PLAIN,HEXAGON.....	4
4	PBOFF	05472	35E07X966	MOTOR ELECTRIC 2 HP 60 HZ 1 PH 115/ 230 V	1
5	PAOZZ	05472	HW2501D13	KEY	1
6	XDOOO	05472	35CB3000	CONDUIT BOX ASSY	1
7	PAOZZ	96906	MS51851-43	SCREW,TAPPING,THREA	4
8	XDOZZ	05472	36CB4500	LID CONDUIT BOX.....	1
9	XDOZZ	05472	36CB4500GA5	GASKET LID.....	1
10	XDOZZ	05472	35CB3000-1	SHELL	1
11	PAOZH	96906	MS90725-6	SCREW,CAP,HEXAGON H	1
12	XDFZZ	05472	HA3100A22	THRU BOLT HEX HD 10-32 X 10-1/8..... STEEL	4
13	PAFZZ	05472	XY1032A02	NUT HEX 10-32	4
14	XDFZZ	05472	35EP3201A03	ENDPLATE FRONT	1
15	XDFZZ	05472	35EP3200A02	ENDPLATE SHAFT	1
16	XDFZZ	05472	HA1000A16	SHIM.....	1
17	XDFZZ	05472	HW5100A03	BEARING,WASHER,THRU	1
18	PAFZZ	21335	205KLL2	BEARING SHAFT END.....	1
19	PAFZZ	21335	203KLL2	BEARING.....	1
20	XDFZZ	05472	35FN5000A02	FAN INTERNAL COOL	1
21	XAFZZ	05472	35RA71874032A01	ROTOR/SHAFT ASSY	1
22	XDFZZ	05472	35RS4060	ROTARY SWITCH ASSY	1
23	PAOZZ	79409	90054A291	SCREW SELF TAPPING	2
24	XDFZZ	05472	35CB3801	COVER CAPACITOR.....	1
25	PAFZZ	05472	EC4850A04	CAPACITOR 115V	1
26	PAFZZ	05472	Z23P3715M	CAPACITOR 370V	1
27	PAFZZ	05472	35GS5000A02	SLEEVE CAPACITOR	1
28	XDFZZ	05472	P5005A16	SWITCH ASSY	1
29	XAFZZ	05472	355A0543X966A01	WOUND STATOR ASSY	1

END OF FIGURE

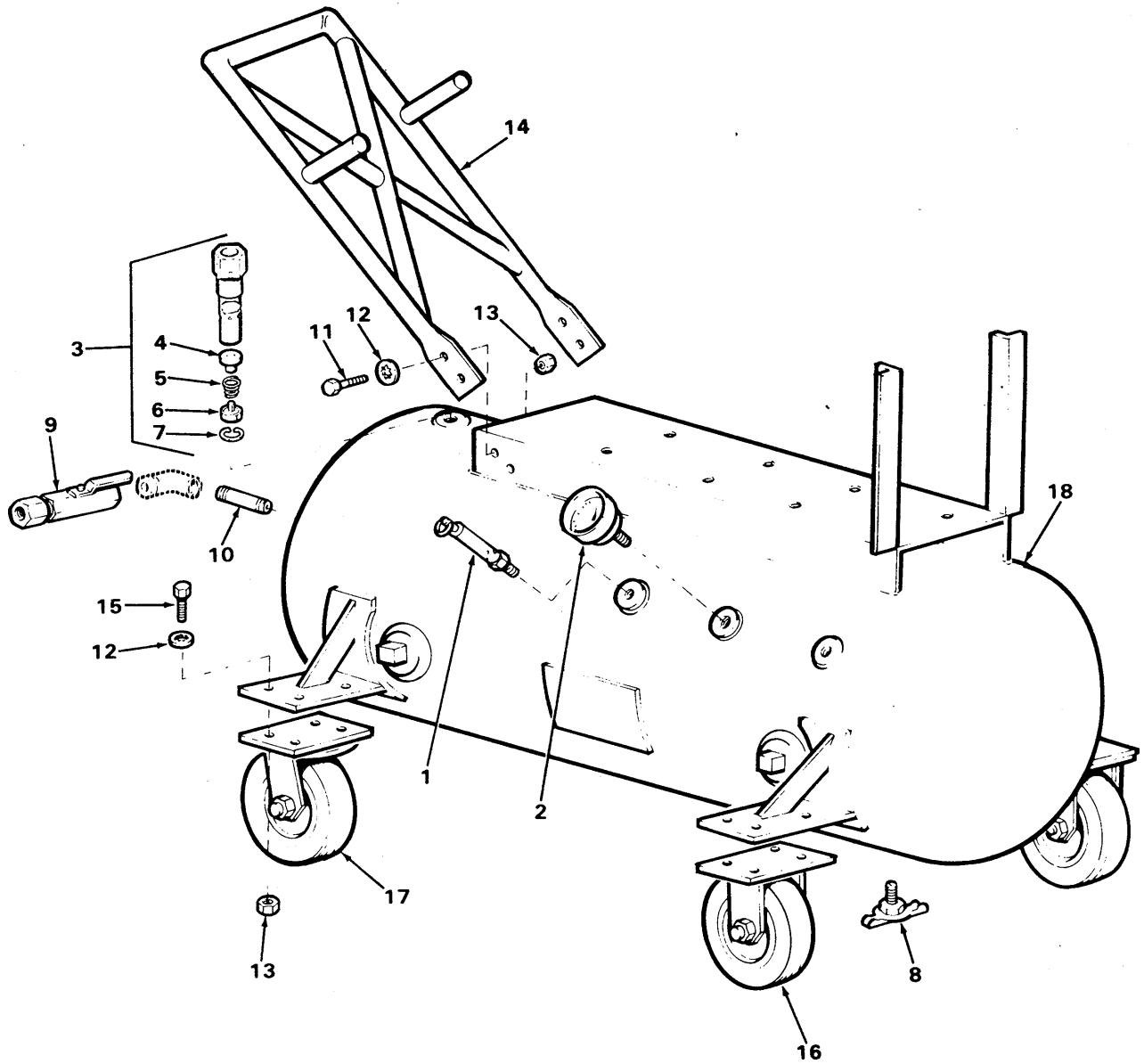


Figure 7. Air tank, valves, and casters

SECTION II

TM 5-4310-384-23P

(1) ITEM NO	(2) SMR CODE	(3) FSCM	(4) PART NUMBER	(5) DESCRIPTION AND USABLE ON CODES (UOC)	(6) QTY
				GROUP 05 AIR RECEIVER SYSTEM	
				FIG. 7 AIR TANK, VALVES, AND CASTERS	
1	PAOZZ	58818	SV-25-200	VALVE,SAFETY RELIEF	1
2	PAOZZ	38056	1000-02B-300-XP	GAUGE PRESSURE.....	1
3	PAOOZ	58818	P3850S-T	VALVE,CHECK	1
4	XAOZZ	58818	350502	GUIDE VALVE	1
5	XAOZZ	58818	350501	SPRING,HELICAL,COMP	1
6	XAOZZ	58818	350500	POPPET	1
7	XAOZZ	58818	350503	RING RETAINING.....	1
8	PAOZH	96906	MS35782-5	COCK,DRAIN	1
9	PAOZA	56173	025-FF-BT	VALVE,BALL.....	1
10	PAOZZ	96906	MS51953-25	NIPPLE,PIPE	1
11	PAOZZ	96906	MS90728-29	BOLT,MACHINE	4
12	PAOZH	96906	MS35333-41	WASHER,LOCK	20
13	PAOZF	96906	MS51967-5	NUT,PLAIN,HEXAGON.....	20
14	XDOZZ	04718	86-451	HANDLE ASSY	1
15	PAOZZ	96906	MS90725-34	BOLT,MACHINE	16
16	PAOZZ	89288	N32-6-RT	CASTER ASSY RIGID.....	2
17	PAOZZ	89228	N22-6-RT	CASTER ASSY SWIVEL	2
18	XDOZZ	04718	83-144	RECEIVER AIR.....	1

END OF FIGURE

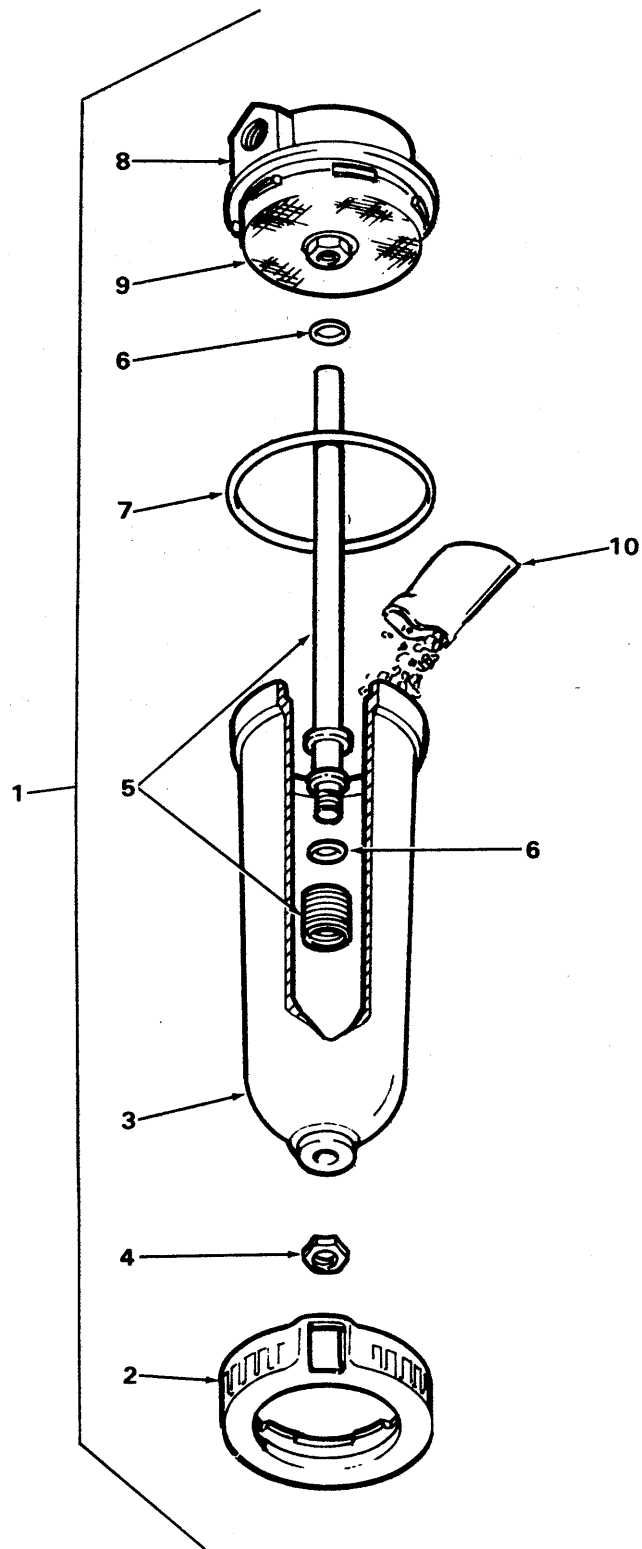


Figure 8 Dehydrator assembly

SECTION II

TM 5-4310-384-23P

(1) ITEM NO	(2) SMR CODE	(3) FSCM	(4) PART NUMBER	(5) DESCRIPTION AND USABLE ON CODES (UOC)	(6) QTY
				GROUP 06 AIR DISCHARGE SYSTEM	
				FIG. 8 DEHYDRATOR ASSEMBLY	
1	PAOOO	98963	X03-02-Q09	DEHYDRATOR ASSY.....	1
2	XDOZZ	98963	X03-02-Q09-1	RING CLAMP.....	1
3	XDOZZ	98963	X03-02-Q09-2	BOWL METAL.....	1
4	PAOZZ	79409	90475A033	NUT LOCK.....	1
5	XDOZZ	98963	DRP-96-435	SIPHON TUBE WITH SCREEN.....	1
6	KFOZZ	98963	X03-02-Q09-4	O-RING PART OF KIT P/N XRP-95-263.....	1
7	KFOZZ	98963	GRP-95-256	O-RING PART OF KIT P/N XRP-95-263.....	1
8	XDOZZ	98963	X03-02-Q09-5	COVER.....	1
9	PAOZZ	98963	DRP-96-434	SCREEN ASSEMBLY.....	1
10	PAOZZ	98963	DRP-85-061	DESICCANT.....	1
	PAOZZ	98963	XRP-95-263	KIT O-RING REPAIR.....	1
			O-RING	(1)	8-6
			O-RING	(1)	8-7

END OF FIGURE

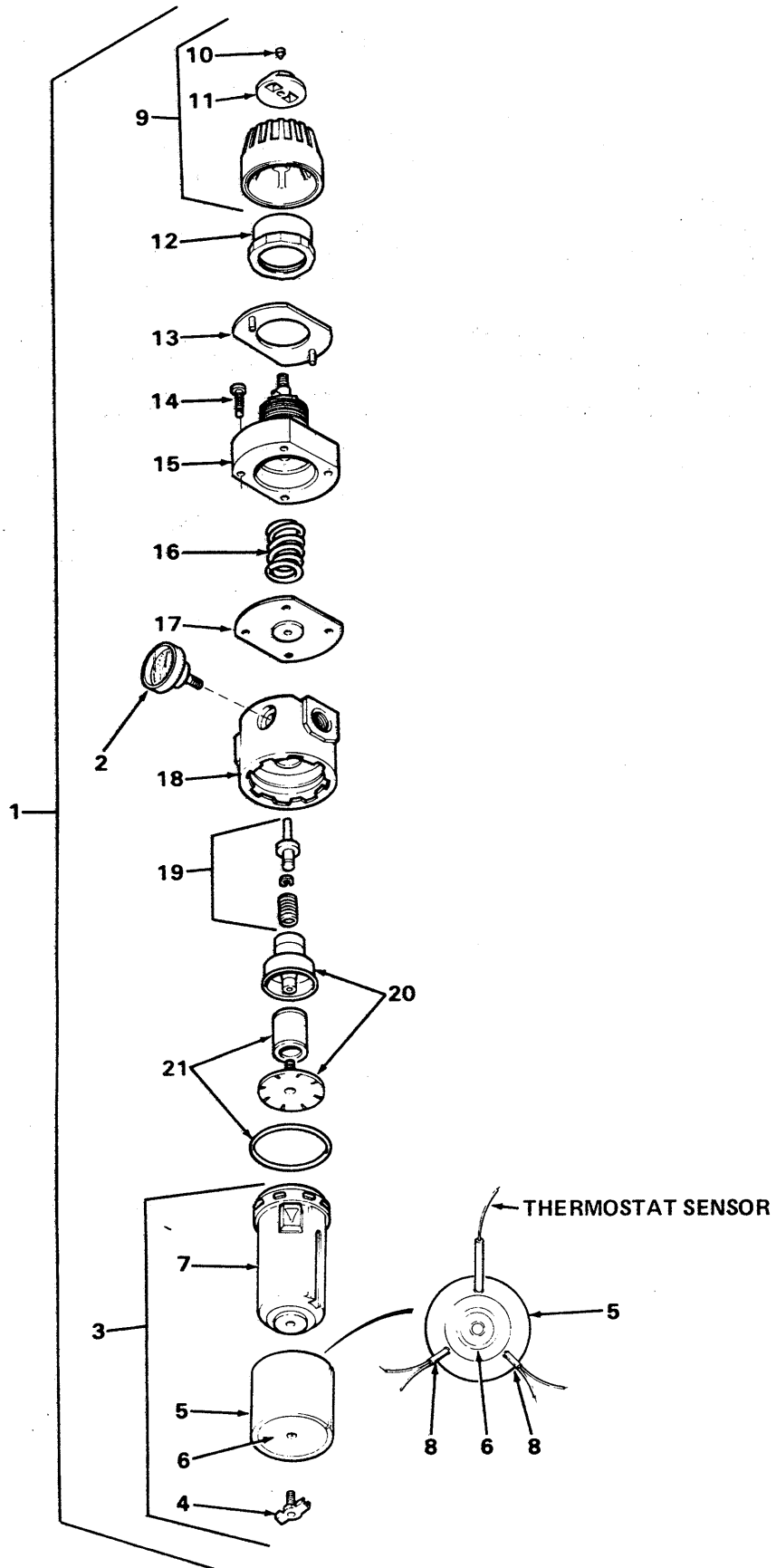


Figure 9. Regulator/filter assembly

SECTION II

(1) ITEM NO	(2) SMR CODE	(3) FSCM	(4) PART NUMBER	(5) DESCRIPTION AND USABLE ON CODES (UOC)	(6) QTY
GROUP 06 AIR DISCHARGE SYSTEM					
FIG. 9 REGULATOR/FILTER ASSEMBLY					
1	PBOOO	04718	86-420	REGULATOR/FILTER AY.....	1
2	PAOZZ	38056	1000-02B-300-XP	GAUGE PRESSURE.....	1
3	PAOZZ	04718	86-421	HEAT BLOCK BOWL AY WITH INSULATION.....	1
4	PAOZZ	98963	GRP-95-182	PETCOCK BRASS.....	1
5	MOOZZ	04718	86-421D	INSULATION ASSY.....	1
6	PAOZZ	04718	86-421B	BLOCK HEATER.....	1
7	XDOZZ	98963	FRP-95-178	BOWL.....	1
8	PAOZZ	04718	86-429	HEATER CARTRIDGE.....	1
9	PAOZZ	98963	RRP-95-007	ADJUSTING KNOB AY.....	1
10	XDOZZ	98963	RRP-95-007-1	SCREW.....	1
11	XAOZZ	98963	RRP-95-007-2	KNOB LOCK.....	1
12	XDOZZ	98963	GPA-95-032	PANEL MOUNT NUT.....	1
13	XDOZZ	98963	RRP-95-218-2	CAP COVER.....	1
14	XDOZZ	98963	RRP-95-218-3	SCREW.....	1
15	XAOZZ	98963	RRP-95-218-4	COVER.....	1
16	XDOZZ	98963	RRP-95-218	SPRING REGULATING.....	1
17	KFOZZ	98963	RRP-96-213	DIAPHRAGM ASSY PART OF KIT P/N CRP- 95-027.....	1
18	XDOZZ	98963	RRP-95-218-5	BODY.....	1
19	KFOZZ	98963	CRP-95-008	STEM AND SPRING AY PART OF KIT P/N..... CRP-95-027.....	1
20	XDOZZ	98963	FRP-95-068	BAFFLE AND ADAPTER PART OF KIT P/N..... CRP-95-027.....	1
21	KFOZZ	98963	FRP-95-034	FILTER ELEMENT PART OF KIT P/N CRP- 95-027.....	1
	PAOZZ	98963	CRP-95-027	REPAIR KIT.....	1
				DIAPHRAGM ASSY (1) 9-17	
				FILTER ELEMENT (1) 9-21	
				STEM AND SPRING AY (1) 9-19	

END OF FIGURE

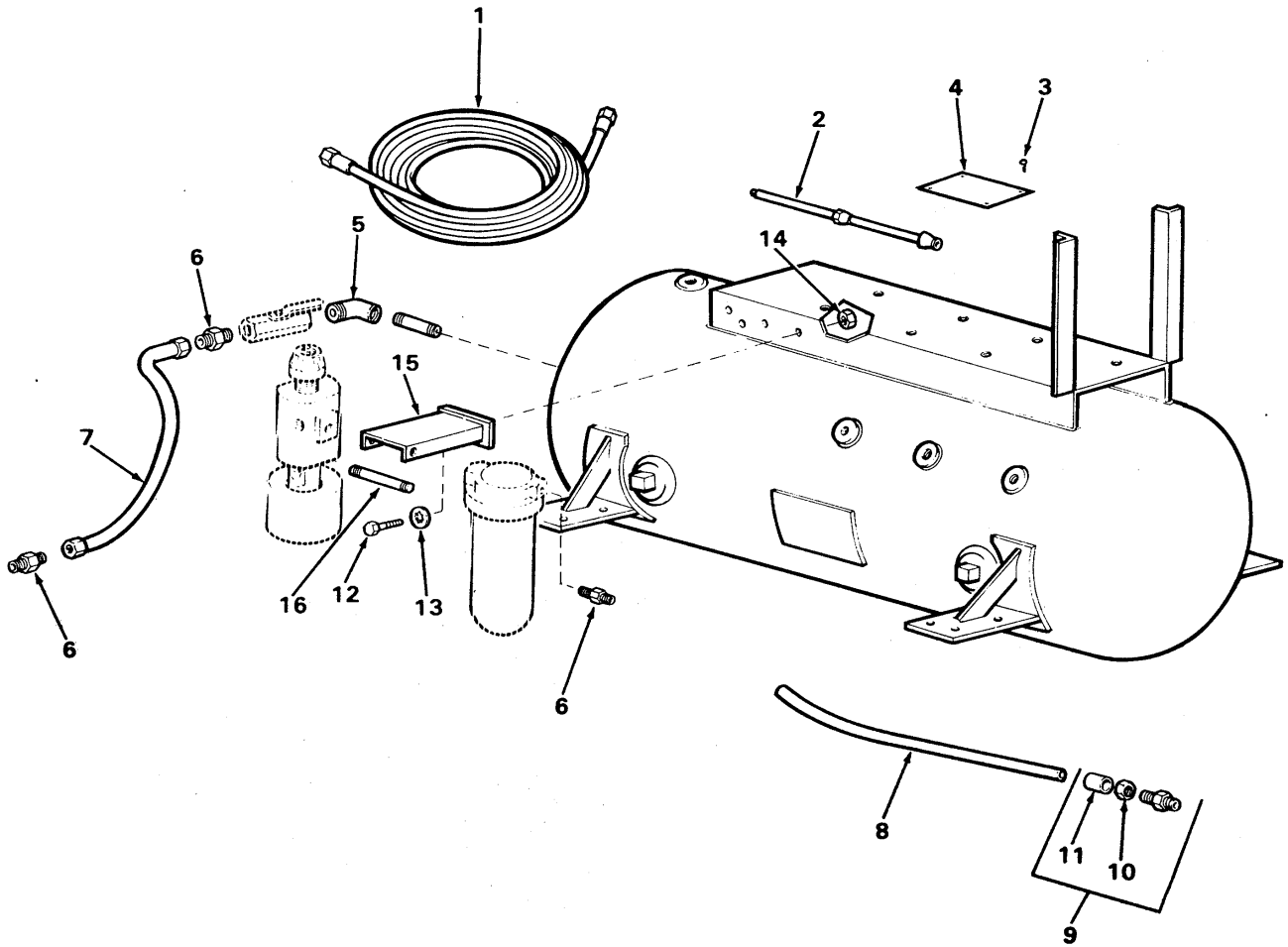


Figure 10. Air discharge system

SECTION II

(1) ITEM NO	(2) SMR CODE	(3) FSCM	(4) PART NUMBER	(5) DESCRIPTION AND USABLE ON CODES (UOC)	(6) QTY
GROUP 06 AIR DISCHARGE SYSTEM					
FIG. 10 AIR DISCHARGE SYSTEM					
1	PAOZZ	04718	88-751	HOSE ASSEMBLY, NONME 50 FT LONG.....	1
2	PAOZZ	94894	78-J1-976	TIRE INFLATOR GAGE.....	1
3	PAOZZ	96906	MS20470A4-4	RIVET, SOLID.....	1
4	XDOZZ	04718	86-452	NAMEPLATE.....	1
5	PAOZZ	96906	MS39230-2	ELBOW, PIPE.....	1
6	PAOZZ	30780	127HB-4-4	ADAPTER.....	2
7	PAOZZ	04718	86-215	HOSE W/FITTINGS.....	1
8	XDOZZ	04718	88-330	UNLOADER TUBE ASSY.....	1
9	PAOZZ	30327	268P1-4X1-8	CONNECTOR.....	1
10	XAOZZ	30327	61C-4	NUT.....	1
11	XAOZZ	30327	60C-4	SLEEVE.....	1
12	PAOZZ	96906	MS90728-32	BOLT, MACHINE.....	2
13	PAOZH	96906	MS35333-41	WASHER, LOCK.....	2
14	PAOZF	96906	MS51967-5	NUT, PLAIN, HEXAGON.....	2
15	XDOZZ	04718	86-216	BRACKET.....	1
16	PAOZZ	96906	MS51953-34	NIPPLE, PIPE.....	1

END OF FIGURE

SECTION II

TM 5-4310-384-23P

(1) ITEM NO	(2) SMR CODE	(3) FSCM	(4) PART NUMBER	(5) DESCRIPTION AND USABLE ON CODES (UOC) GROUP 07 BULK MATERIALS FIG. BULK	(6) QTY
1	PAOZZ	79409	4463K78	INSULATION THERMAL.....	1
2	PAOZZ	79409	8601K26	RUBBER SPONGE.....	1
3	PAOZZ	81348	J-C-30ATHN-600-C -E-1/12-SR-SJ-0	WIRE-ELECT.....	1
4	PAOZZ	81348	J-C-30ATHN-600-C -E-1/16-SR-SJ-2	WIRE-500 FT COIL.....	1

END OF FIGURE

BULK-1

SECTION III

Not Applicable

CROSS-REFERENCE INDEXES

NATIONAL STOCK NUMBER INDEX

STOCK NUMBER	FIG.	ITEM	STOCK NUMBER	FIG.	ITEM
4310-00-035-6246	4	3	4310-00-911-6607	4	4
5305-00-068-0498	2	10	4310-00-911-6608	4	5
5305-00-068-0502	5	1	4310-00-911-9566	5	20
	6	11	4310-00-911-9571	5	17
5940-00-113-9825	1	28	5305-00-984-6191	2	1
6680-00-150-6875	3	29	5305-00-988-1723	1	30
3110-00-156-3502	6	19	4820-01-005-4426	7	9
5310-00-167-0721	2	4	6110-01-007-5291	1	7
	3	12	4310-01-021-1589	5	19
	7	12	5330-01-022-1857	4	15
	10	13	5340-01-039-5950	4	22
4730-00-196-1465	7	10	4310-01-039-5955	5	18
4730-00-196-1487	10	16	4310-01-039-6115	4	18
5305-00-206-2508	1	9	4310-01-039-6504	3	28
4730-00-213-0651	3	18	4310-01-040-3470	3	27
5305-00-225-3843	1	31	4310-01-040-7863	5	16
5306-00-225-8499	3	11	4820-01-041-8006	4	17
	7	15	4310-01-052-2462	5	4
5306-00-225-8503	4	13	5330-01-065-5889	4	23
5306-00-226-4822	4	10	5305-01-065-9046	4	16
	7	11	5330-01-073-6966	4	19
5306-00-226-4825	2	3	5330-01-073-6967	4	12
	6	1	5306-01-075-8519	4	7
	10	12	5310-01-077-6817	3	8
4730-00-253-4412	10	5	4720-01-084-0118	10	1
5315-00-256-4794	3	23	4730-01-096-1611	3	20
5305-00-267-8954	5	10	4935-01-100-6567	5	22
5305-00-267-8956	4	21	5330-01-102-2460	4	
4730-00-270-4616	3	2	4310-01-102-7127	5	
5330-00-291-2337	3	24	5330-01-106-9382	4	2
5330-00-295-8839	4	9	5330-01-106-9383	4	6
4730-00-432-7205	3	5	4820-01-156-0523	7	1
4310-00-462-1487	3	17	4730-01-283-9810	3	15
5310-00-550-1130	1	33	4820-01-290-9049	7	3
5310-00-559-0070	2	2	4820-01-299-0411	3	16
5320-00-584-9078	10	3			
5930-00-655-1575	1	34			
5305-00-757-8287	6	7			
5365-00-808-3957	5	15			
5310-00-809-3078	2	5			
	6	2			
4540-00-838-3539	1	18			
4820-00-849-1220	7	8			
5310-00-880-7744	3	13			
	6	3			
	7	13			
	10	14			
5330-00-900-2337	5	5			
5330-00-900-2339	5	7			
5330-00-900-2340	5	8			

CROSS-REFERENCE INDEXES

FSCM	PART NUMBER	PART NUMBER INDEX		FIG.	ITEM
			STOCK NUMBER		
11568	A-100			5	2
11568	A-15		5340-01-039-5950	4	22
11568	A-21		4310-01-021-1589	5	19
11568	A-24-3			5	12
11568	A-24-4			5	14
11568	A-29		5330-01-073-6967	4	12
11568	A-33		5330-01-065-5889	4	23
11568	A-4-A			5	21
11568	A-6A			4	20
81346	ASTMB280			3	1
71176	A52			2	7
11568	B-14		6680-00-150-6875	3	29
11568	B-26A		4310-00-035-6246	4	3
11568	B-28B			4	1
11568	B-31		5330-01-073-6966	4	19
11568	B-75		5330-01-106-9382	4	2
11568	B-9			5	24
11568	C-1			4	8
11568	C-14C			5	6
83879	C-15L			1	25
11568	C-21A		4310-01-040-7863	5	16
11568	C-30		5330-00-900-2337	5	5
11568	C-30A		5330-00-900-2339	5	7
11568	C-30B		5330-00-900-2340	5	8
11568	C-31		5330-00-295-8839	4	9
11568	C-4A		4310-01-039-5955	5	18
11568	C-5			5	2 3
11568	C-6B			4	11
11568	CAW1		4310-00-462-7487	3	17
04718	CAW1CH			3	14
98963	CRP-95-008			9	19
98963	CRP-95-027			9	
98963	DRP-85-061			8	10
98963	DRP-96-434			8	9
98963	DRP-96-435			8	5
23826	D24817-001			1	13
23326	D24826-001			1	12
23826	D24827-001			1	5
23826	D25551-001			1	14
23826	D54670-001			1	11
23826	D54873001			1	10
23826	D73062001			1	4
23826	D73062001-1			1	3
23826	D73116022			1	6
23826	D74400001			1	17
05472	EC4850A04			6	25
98963	FRP-95-034			9	21
98963	FRP-95-068			9	20
98963	FRP-95-178			9	7
98963	GPA-95-032			9	12
98963	GRP-95-182			9	4

CROSS-REFERENCE INDEXES

FSCM	PART NUMBER	PART NUMBER INDEX		FIG.	ITEM
			STOCK NUMBER		
98963	GRP-95-256			8	7
05472	HA100CA16			6	16
05472	HA3100A22			6	12
05472	HW2501D13			6	5
05472	HW5100A03			6	17
23826	H41	4540-00-838-3539		1	18
71176	H5/8			2	9
81348	J-C-30ATHN-600-C -E-1/12-SR-SJ-0			BULK	3
81348	J-C-30ATHN-600-C -E-1/16-SR-SJ-2			BULK	4
11568	M-1561			4	14
11568	M-1562	4310-01-039-6115		4	18
11568	M-1563	4820-01-041-8006		4	17
11568	M-1564	5330-01-022-1857		4	15
11568	M-1565	5305-01-065-9046		4	16
11568	M-1586	4310-01-040-3470		3	27
11568	M-1587	4310-01-039-6504		3	28
11568	M-1796	4730-01-096-1611		3	20
11568	M-461	4730-00-213-0651		3	18
11568	M-568			3	22
96906	MS16625-1056	5365-00-808-3957		5	15
96906	MS20066-256	5315-00-256-4794		3	23
96906	MS20470A4-4	5320-00-584-9078		10	3
96906	MS20659-141	5940-00-113-9825		1	28
96906	MS27183-11	5310-00-809-3078		2	5
				6	2
96906	MS35059-22	5930-00-655-1575		1	34
96906	MS35206-243	5305-00-984-6191		2	1
96906	MS35206-279	5305-00-988-1723		1	30
96906	MS35215-53	5305-00-206-2508		1	9
96906	MS35333-38	5310-00-559-0070		2	2
96906	MS35333-40	5310-00-550-1130		1	33
96906	MS35333-41	5310-00-167-0721		2	4
				3	12
				7	12
				10	13
96906	MS35425-72	5310-01-077-6817		3	8
96906	MS35782-5	4820-00-849-1220		7	8
96906	MS39230-2	4730-00-253-4412		10	5
96906	MS51851-43	5305-00-757-8287		6	7
96906	MS51953-25	4730-00-196-1465		7	10
96906	MS51953-34	4730-00-196-1487		10	16
96906	MS51953-59			3	19
96906	MS51967-2			1	32
96906	MS51967-5	5310-00-880-7744		3	13
				6	3
				7	13
				10	14
96906	MS90725-1	5305-00-068-0498		2	10
96906	MS90725-34	5306-00-225-8499		3	11

CROSS-REFERENCE INDEXES

FSCM	PART NUMBER	PART NUMBER INDEX		FIG.	ITEM
			STOCK NUMBER		
96906	MS90725-34		5306-00-225-8499	7	15
96906	MS90725-36		5306-01-075-8519	4	7
96906	MS90725-39		5306-00-225-8503	4	13
96906	MS90725-6		5305-00-068-0502	5	1
				6	11
96906	MS90727-10		5305-00-267-8954	5	21
96906	MS90727-12		5305-00-267-8956	4	21
96906	MS90728-29		5306-00-226-4822	4	10
				7	11
96906	MS90728-32		5306-00-226-4825	2	3
				6	1
				10	12
96906	MS90728-8		5305-00-225-3843	1	31
11568	NR-4-7AL			3	21
89228	N22-6-RT			7	17
89288	N32-6-RT			7	16
11568	P-4581A		4310-01-052-2462	5	4
11568	P-4582A			5	3
11568	P-5086A			5	13
11568	P-5087A			5	11
11568	P-5821D			3	25
58818	P3850S-T		4820-01-290-9049	7	3
98963	RRP-95-007			9	9
98963	RRP-95-007-1			9	11
98963	RRP-95-007-2			9	11
98963	RRP-95-218			9	16
98963	RRP-95-218-2			9	13
98963	RRP-95-218-3			9	14
98963	RRP-95-218-4			9	15
98963	RRP-95-218-5			9	18
98963	RRP-96-213			9	17
04229	SP1/4TF			1	39
05472	SP5005A16			6	28
83879	SR9-507			1	29
58818	SV-25-200		4820-01-156-0523	7	1
11568	U-48		5330-01-106-9383	4	6
78229	XC-491			1	22
98963	XRP-95-263			8	
05472	XY1032A02			6	13
98963	X03-02-Q09			8	1
98963	X03-02-Q09-1			8	2
98963	X03-02-Q09-2			8	3
98963	X03-02-Q09-4			8	6
98963	X03-02-Q09-5			8	8
73559	Y01			1	35
11568	Z-A10		4310-00-911-9566	5	20
11568	Z-C10		4310-00-911-9571	5	17
11568	Z-C16		4935-01-100-6567	5	22
11568	Z-1053			5	9
11568	Z-122A		4310-00-911-6608	4	5
11568	Z-132			5	

CROSS-REFERENCE INDEXES

FSCM	PART NUMBER	PART NUMBER INDEX		FIG.	ITEM
			STOCK NUMBER		
11568	Z-184		4310-00-911-6607	4	4
11568	Z-515			3	26
11568	Z-772		5330-01-102-2460	4	
11568	ZCAW		4310-01-102-7127	5	
05472	Z23P3715M			6	26
56173	025-FF-BT		4820-01-005-4426	7	9
38056	1000-02B-300-XPB			7	2
				9	2
81348	12 GA THW BL			1	26
30780	127HB-4-4			10	6
75336	128-60X1/8		4820-01-299-0411	3	16
23826	14DP12AA			1	2
11568	14812		5330-00-291-2337	3	24
81348	16 GA THW RED			1	27
93061	169C-6-6		4730-00-432-7205	3	5
70485	1724			1	20
71176	2AK46H			2	8
25795	2E552			1	37
21335	203KLL2		3110-00-156-3502	6	19
21335	205KLL2			6	18
30327	268P1-4X1-8			10	9
05472	35CB3000			6	6
05472	35CB3000-1			6	10
05472	35CB3801			6	24
07472	35EP3200A02			6	15
05472	35EP3201A03			6	14
05472	35E07X966			6	4
05472	35FN500A02			6	20
05472	35GS500A02			6	27
05472	35RA71874032A01			6	21
05472	35RS4060			6	22
05472	35SA0543X966A01			6	29
58818	350500			7	6
58818	35 05 01			7	5
58818	350502			7	4
58818	350503			7	7
05472	36CB4500			6	8
05472	36CB4500GA5			6	9
79409	4463K78			BULK	1
23826	48DC11AA2			1	16
30327	60C-4			10	11
93061	60C-6			3	4
				3	7
30327	61C-4			10	10
93061	61C-6			3	3
				3	6
93061	68C-6-6		4730-00-270-4616	3	2
23826	69MC8Y2A			1	36
03743	7245-V			1	24
23826	75CF14		6110-01-007-5291	1	7
23826	75D73070A			1	15

CROSS-REFERENCE INDEXES

FSCM	PART NUMBER	PART NUMBER INDEX		FIG.	ITEM
			STOCK NUMBER		
23826	75P1000			1	8
94894	78-J1-976			10	2
04718	83-144			7	18
04718	86-127			3	10
04718	86-128			3	9
04718	86-186		4730-01-283-9810	3	15
04718	86-215			10	7
04718	86-216			10	15
04718	86-389			1	38
04718	86-420			9	1
04718	86-421			9	3
04718	86-421B			9	6
04718	86-421D			9	5
04718	86-427			1	23
04718	86-428			1	21
04718	86-429			9	8
04718	86-451			7	14
04718	86-452			10	4
04718	86-465			1	1
04718	86-503			1	19
79409	8601K26			BULK	2
04718	88-330			10	8
04718	88-684			2	6
04718	88-751		4720-01-084-0118	10	1
79409	90054A291			6	23
79409	90475A033			8	4

CROSS REFERENCE INDEXES

FIG.	ITEM	FIGURE AND ITEM NUMBER INDEX		PART NUMBER
		STOCK NUMBER	FSCM	
BULK	1		79409	4463K78
BULK	2		79409	8601K26
BULK	3		81348	J-C-30ATHN-600-C -E-1/12-SR-SJ-0
BULK	4		81348	J-C-30ATHN-600-C -E-1/16-SR-SJ-2
1	1		04718	86-465
1	2		23826	14DP12AA
1	3		23826	D73062001-1
1	4		23826	D73062001
1	5		23826	D24827-001
1	6		23826	D73116022
1	7	6110-01-007-5291	23826	75CF14
1	8		23826	75P1000
1	9	5305-00-206-2508	96906	MS35215-53
1	10		23826	D54873001
1	11		23826	D54670-001
1	12		23826	D24826-001
1	13		23826	D24817-001
1	14		23826	D25551-001
1	15		23826	75D73070A
1	16		23826	48DC11AA2
1	17		23826	D74400001
1	18	4540-00-838-3539	23826	H41
1	19		04718	86-503
1	20		70485	1724
1	21		04718	86-428
1	22		78229	XC-491
1	23		04718	86-427
1	24		03743	7245-V
1	25		83879	C-15L
1	26		81348	12 GA THW BL
1	27		81348	16 GA THW RED
1	28	5940-00-113-9825	96906	MS20659-141
1	29		83879	SR9-507
1	30	5305-00-988-1723	96906	MS35206-279
1	31	5305-00-225-3843	96906	MS90728-8
1	32		96906	MS51967-2
1	33	5310-00-550-1130	96906	MS35333-40
1	34	5930-00-655-1575	96906	MS35059-22
1	35		73559	Y01
1	36		23826	69MC8Y2A
1	37		25795	2E552
1	38		04718	86-389
1	39		04229	SP1/4TF
2	1	5305-00-984-6191	96906	MS35206-243
2	2	5310-00-559-0070	96906	MS35333-38
2	3	5306-00-226-4825	96906	MS90728-32
2	4	5310-00-167-0721	96906	MS35333-41
2	5	5310-00-809-3078	96906	MS27183-11
2	6		04718	88-684

CROSS REFERENCE INDEXES

FIG.	ITEM	FIGURE AND ITEM NUMBER INDEX		PART NUMBER
		STOCK NUMBER	FSCM	
2	7		71176	A52
2	8		71176	2AK46H
2	9		71176	H5/8
2	10	5305-00-068-0498	96906	MS90725-1
3	1		81346	ASTMB280
3	2	4730-00-270-4616	93061	68C-6-6
3	3		93061	61C-6
3	4		93061	60C-6
3	5	4730-00-432-7205	93061	169C-6-6
3	6		93061	61C-6
3	7		93061	60C-6
3	8	5310-01-077-6817	96906	MS35425-72
3	9		04718	86-128
3	10		04718	86-127
3	11	5306-00-225-8499	96906	MS90725-34
3	12	5310-00-167-0721	96906	MS35333-41
3	13	5310-00-880-7744	96906	MS51967-5
3	14		04718	CAW1CH
3	15	4730-01-283-9810	04718	86-186
3	16	4820-01-299-0411	75336	128-60X1/8
3	17	4310-00-462-7487	11568	CAW1
3	18	4730-00-213-0651	11568	M-461
3	19		96906	MS51953-59
3	20	4730-01-096-1611	11568	M-1796
3	21		11568	NR-4-7AL
3	22		11568	M-568
3	23	5315-00-256-4794	96906	MS20066-256
3	24	5330-00-291-2337	11568	14812
3	25		11568	P-5821D
3	26		11568	Z-515
3	27	4310-01-040-3470	11568	M-1586
3	28	4310-01-039-6504	11568	M-1587
3	29	6680-00-150-6875	11568	B-14
4		5330-01-102-2460	11568	Z-772
4	1		11568	B-28B
4	2	5330-01-106-9382	11568	B-75
4	3	4310-00-035-6246	11568	B-26A
4	4	4310-00-911-6607	11568	Z-184
4	5	4310-00-911-6608	11568	Z-122A
4	6	5330-01-106-9383	11568	U-48
4	7	5306-01-075-8519	96906	MS90725-36
4	8		11568	C-1
4	9	5330-00-295-8839	11568	C-31
4	10	5306-00-226-4822	96906	MS90728-29
4	11		11568	C-6B
4	12	5330-01-073-6967	11568	A-29
4	13	5306-00-225-8503	96906	MS90725-39
4	14		11568	M-1561
4	15	5330-01-022-1857	11568	M-1564
4	16	5305-01-065-9046	11568	M-1565
4	17	4820-01-041-8006	11568	M-1563

CROSS REFERENCE INDEXES

FIG.	ITEM	FIGURE AND ITEM NUMBER INDEX		PART NUMBER
		STOCK NUMBER	FSCM	
4	18	4310-01-039-6115	11568	M-1562
4	19	5330-01-073-6966	11568	B-31
4	20		11568	A-6A
4	21	5305-00-267-8956	96906	MS90727-12
4	22	5340-01-039-5950	11568	A-15
4	23	5330-01-065-5889	11568	A-33
5			11568	Z-132
5		4310-01-102-7127	11568	ZCAW
5	1	5305-00-068-0502	96906	MS9U725-6
5	2		11568	A-100
5	3		11568	P-4582A
5	4	4310-01-052-2462	11568	P-4581A
5	5	5330-00-900-2337	11568	C-30
5	6		11568	C-14C
5	7	5330-00-900-2339	11568	C-30A
5	8	5330-00-900-2340	11568	C-30B
5	9		11568	Z-1053
5	10	5305-00-267-8954	96906	MS90727-10
5	11		11568	P-5087A
5	12		11568	A-24-3
5	13		11568	P-5086A
5	14		11568	A-24-4
5	15	5365-00-808-3957	96906	MS16625-1056
5	16	4310-01-040-7863	11568	C-21A
5	17	4310-00-911-9571	11568	Z-C10
5	18	4310-01-039-5955	11568	C-4A
5	19	4310-01-021-1589	11568	A-21
5	20	4310-00-911-9566	11568	Z-A10
5	21		11568	A-4-A
5	22	4935-01-100-6567	11568	Z-C16
5	23		11568	C-5
5	24		11568	B-9
6	1	5306-00-226-4825	96906	MS90728-32
6	2	5310-00-809-3078	96906	MS27183-11
6	3	5310-00-880-7744	96906	MS51967-5
6	4		05472	35E07X966
6	5		05472	HW2501D13
6	6		05472	35CB3000
6	7	5305-00-757-8287	96906	MS51851-43
6	8		05472	36CB4500
6	9		05472	36CB4500GA5
6	10		05472	35CB3000-1
6	11	5305-00-068-0502	96906	MS90725-6
6	12		05472	HA3100A22
6	13		05472	XY1032A02
6	14		05472	35EP3201A03
6	15		07472	35EP3200A02
6	16		05472	HA1000A16
6	17		05472	HW510A03
6	18		21335	205KLL2
6	19	3110-00-156-3502	21335	203KLL2

CROSS REFERENCE INDEXES

FIG.	ITEM	FIGURE AND ITEM NUMBER INDEX		PART NUMBER
		STOCK NUMBER	FSCM	
6	20		05472	35FN5000A02
6	21		05472	35RA71874032A01
6	22		05472	35RS4060
6	23		79409	90054A291
6	24		05472	35CB3801
6	25		05472	EC4850A04
6	26		05472	Z23P3715M
6	27		05472	35GS500CA02
6	28		05472	SP5005A16
6	29		05472	355A0543X966A01
7	1	4820-01-156-0523	58818	SV-25-200
7	2		38056	1000-02B-300-XPB
7	3	4820-01-290-9049	58818	P3850S-T
7	4		58818	350502
7	5		58818	350501
7	6		58818	350500
7	7		58818	350503
7	8	4820-00-849-1220	96906	MS35782-5
7	9	4820-01-005-4426	56173	025-FF-BT
7	10	4730-00-196-1465	96906	MS51953-25
7	11	5306-00-226-4822	96906	MS90728-29
7	12	5310-00-167-0721	96906	MS35333-41
7	13	5310-00-880-7744	96906	MS51967-5
7	14		04718	86-451
7	15	5306-00-225-8499	96906	MS90725-34
7	16		89288	N32-6-RT
7	17		89228	N22-6-RT
7	18		04718	83-144
8			98963	XRP-95-263
8	1		98963	X03-02-Q09
8	2		98963	X03-02-Q09-1
8	3		98963	X03-02-Q09-2
8	4		79409	90475A033
8	5		98963	DRP-96-435
8	6		98963	X03-02-Q09-4
8	7		98963	GRP-95-256
8	8		98963	X03-02-Q09-5
8	9		98963	DRP-96-434
8	10		98963	DRP-85-061
9			98963	CRP-95-027
9	1		04718	86-420
9	2		38056	1000-02B-300-XPB
9	3		04718	86-421
9	4		98963	GRP-95-182
9	5		04718	86-421D
9	6		04718	86-421B
9	7		98963	FRP-95-178
9	8		04718	86-429
9	9		98963	RRP-95-007
9	10		98963	RRP-95-007-1
9	11		98963	RRP-95-007-2

CROSS REFERENCE INDEXES

FIG.	ITEM	FIGURE AND ITEM NUMBER INDEX		PART NUMBER
		STOCK NUMBER	FSCM	
9	12		98963	GPA-95-032
9	13		98963	RRP-95-218-2
9	14		98963	RRP-95-218-3
9	15		98963	RRP-95-218-4
9	16		98963	RRP-95-218
9	17		98963	RRP-96-213
9	18		98963	RRP-95-218-5
9	19		98963	CRP-95-008
9	20		98963	FRP-95-068
9	21		98963	FRP-95-034
10	1	4720-01-084-0118	04718	88-751
10	2		94894	78-J1-976
10	3	5320-00-584-9078	96906	MS20470A4-4
10	4		04718	86-452
10	5	4730-00-253-4412	96906	MS39230-2
10	6		30780	127HB-4-4
10	7		04718	86-215
10	8		04718	88-330
10	9		30327	268P1-4X1-8
10	10		30327	61C-4
10	11		30327	60C-4
10	12	5306-00-226-4825	96906	MS90728-32
10	13	5310-00-167-0721	96906	MS35333-41
10	14	5310-00-880-7744	96906	MS51967-5
10	15		04718	86-216
10	16	4730-00-196-1487	96906	MS51953-34

By Order of the Secretary of the Army:

CARL E. VUONO
General, United States Army
Chief of Staff

Official:

THOMAS F. SIKORA
Brigadier General, United States Army
The Adjutant General

Distribution:

To be distributed in accordance with DA Form 1 2-25A, Unit and Direct Support and General Support Maintenance Requirements for Compressor, Reciprocating, Air, Electric 5 CFM, 175 PSI. (20-904, 20-911).

RECOMMENDED CHANGES TO EQUIPMENT TECHNICAL PUBLICATIONS



THEN...JOT DOWN THE DOPE ABOUT IT ON THIS FORM. CAREFULLY TEAR IT OUT, FOLD IT AND DROP IT IN THE MAIL.

SOMETHING WRONG WITH PUBLICATION

FROM: (PRINT YOUR UNIT'S COMPLETE ADDRESS)

DATE SENT

PUBLICATION NUMBER	PUBLICATION DATE	PUBLICATION TITLE
--------------------	------------------	-------------------

BE EXACT PIN-POINT WHERE IT IS				IN THIS SPACE, TELL WHAT IS WRONG AND WHAT SHOULD BE DONE ABOUT IT.
PAGE NO.	PARA-GRAPH	FIGURE NO.	TABLE NO.	

TEAR ALONG PERFORATED LINE

PRINTED NAME, GRADE OR TITLE AND TELEPHONE NUMBER	SIGN HERE
---	-----------

DA FORM 1 JUL 79 2028-2

PREVIOUS EDITIONS ARE OBSOLETE.

P.S.--IF YOUR OUTFIT WANTS TO KNOW ABOUT YOUR RECOMMENDATION MAKE A CARBON COPY OF THIS AND GIVE IT TO YOUR HEADQUARTERS.

The Metric System and Equivalents

Linear Measure

1 centimeter = 10 millimeters = .39 inch
 1 decimeter = 10 centimeters = 3.94 inches
 1 meter = 10 decimeters = 39.37 inches
 1 dekameter = 10 meters = 32.8 feet
 1 hectometer = 10 dekameters = 328.08 feet
 1 kilometer = 10 hectometers = 3,280.8 feet

Weights

1 centigram = 10 milligrams = .15 grain
 1 decigram = 10 centigrams = 1.54 grains
 1 gram = 10 decigrams = .035 ounce
 1 dekagram = 10 grams = .35 ounce
 1 hectogram = 10 dekagrams = 3.52 ounces
 1 kilogram = 10 hectograms = 2.2 pounds
 1 quintal = 100 kilograms = 220.46 pounds
 1 metric ton = 10 quintals = 1.1 short tons

Liquid Measure

1 centiliter = 10 milliliters = .34 fl. ounce
 1 deciliter = 10 centiliters = 3.38 fl. ounces
 1 liter = 10 deciliters = 33.81 fl. ounces
 1 dekaliter = 10 liters = 2.64 gallons
 1 hectoliter = 10 dekaliters = 26.42 gallons
 1 kiloliter = 10 hectoliters = 264.18 gallons

Square Measure

1 sq. centimeter = 100 sq. millimeters = .155 sq. inch
 1 sq. decimeter = 100 sq. centimeters = 15.5 sq. inches
 1 sq. meter (centare) = 100 sq. decimeters = 10.76 sq. feet
 1 sq. dekameter (are) = 100 sq. meters = 1,076.4 sq. feet
 1 sq. hectometer (hectare) = 100 sq. dekameters = 2.47 acres
 1 sq. kilometer = 100 sq. hectometers = .386 sq. mile

Cubic Measure

1 cu. centimeter = 1000 cu. millimeters = .06 cu. inch
 1 cu. decimeter = 1000 cu. centimeters = 61.02 cu. inches
 1 cu. meter = 1000 cu. decimeters = 35.31 cu. feet

Approximate Conversion Factors

To change	To	Multiply by	To change	To	Multiply by
inches	centimeters	2.540	ounce-inches	newton-meters	.007062
feet	meters	.305	centimeters	inches	.394
yards	meters	.914	meters	feet	3.280
miles	kilometers	1.609	meters	yards	1.094
square inches	square centimeters	6.451	kilometers	miles	.621
square feet	square meters	.093	square centimeters	square inches	.155
square yards	square meters	.836	square meters	square feet	10.764
square miles	square kilometers	2.590	square meters	square yards	1.196
acres	square hectometers	.405	square kilometers	square miles	.386
cubic feet	cubic meters	.028	square hectometers	acres	2.471
cubic yards	cubic meters	.765	square meters	cubic feet	35.315
fluid ounces	milliliters	29.573	cubic meters	cubic yards	1.308
pints	liters	.473	cubic meters	fluid ounces	.034
quarts	liters	.946	milliliters	pints	2.113
gallons	liters	3.785	liters	quarts	1.057
ounces	grams	28.349	liters	gallons	.264
pounds	kilograms	.454	grams	ounces	.035
short tons	metric tons	.907	kilograms	pounds	2.205
pound-feet	newton-meters	1.356	metric tons	short tons	1.102
pound-inches	newton-meters	.11296			

Temperature (Exact)

°F	Fahrenheit temperature	5/9 (after subtracting 32)	Celsius temperature	°C
----	------------------------	----------------------------	---------------------	----

